

A = DIAMETRO ACOPLAMIENTO      A = HUB DIAMETER  
 B = DIAMETRO EXTERIOR          B = EXTERIOR DIAMETER  
 C = ENTRECENTROS TALADRO      C = DISTANCE BETWEEN HOLES  
 D = ANCHO DEL DISCO              D = THICKNESS  
 E = ALTURA TOTAL                E = TOTAL HEIGHT  
 X = TALADROS                      X = HOLES  
 D-T = DELANTERO - TRASERO      D-T = FRONT - REAR  
 S-V = MACIZO - VENTILADO       S-V = SOLID - VENTED

EDICION 06/2011

MODELO	AÑO	Observaciones	D	S	REF.	A	B	C	D	D	E	X		KG
			T	V	ADR98					MIN		Ø	Nº	

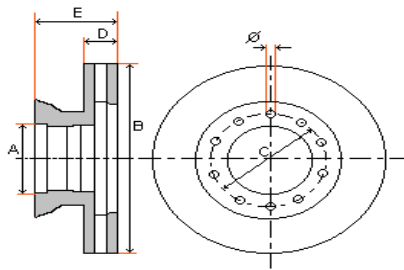
<b>ACERBI</b>	<b>Remolque / Trailer</b>
---------------	---------------------------

SMB - Ejes 22,5"				V	1810430.1 1810430.7	280	430	335	45	37	155	26.5	10	34
	CON ABS													
SMB - Ejes 17,5"				V	1810370.1 1832815.7	169	377	195	45	37	138	M14 x 150	8	25
	CON ABS													

<b>ALEXANDER</b>	<b>Autobús / Bus</b>
------------------	----------------------

ALX100 8.1 - 8.5M MINI	97-99		D	V	1853324.0	118	324	140	30	26	91	M12 x 150	6	11
			T	V	1853324.2	157	324	192	30	26	120	M12 x 150	6	10
ALX400 10.5M Ejes Volvo	00-		D	V	1857438.0	195	438	235	45	37	127	M16 x 150	10	35

--	--	--	--	--	--	--	--	--	--	--	--	--	--	--



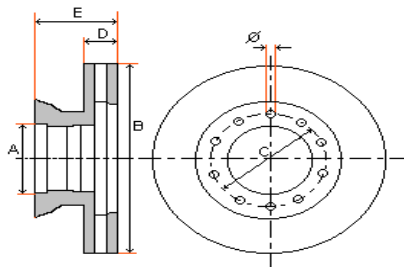
A = DIAMETRO ACOPLAMIENTO      A = HUB DIAMETER  
 B = DIAMETRO EXTERIOR          B = EXTERIOR DIAMETER  
 C = ENTRECENTROS TALADRO      C = DISTANCE BETWEEN HOLES  
 D = ANCHO DEL DISCO              D = THICKNESS  
 E = ALTURA TOTAL                E = TOTAL HEIGHT  
 X = TALADROS                      X = HOLES  
 D-T = DELANTERO - TRASERO      D-T = FRONT - REAR  
 S-V = MACIZO - VENTILADO        S-V = SOLID - VENTED

EDICION 06/2011

MODELO	AÑO	Observaciones	D	S	REF.	A	B	C	D	D	E	X		KG
			T	V	ADR98					MIN		Ø	Nº	

<b>AUWATER</b>	<b>Autobús / Bus</b>
----------------	----------------------

<b>BUS</b>			D	V	<b>1861315.0</b>	170	315	245	35	26	149	18.5	6	19
												M10	2	
<b>CENTROLINER</b>			D-T	V	<b>1861430.0</b>	200	430	235	45	39	131	M16	10	30
N4407												x		
N4410												150		
N4413														
N4414														
N4416			D-T	V	<b>1870430.0</b>	203	430	235	45	39	131	M16	10	31
N4420												x		
N4421												150		
N4426														
<b>CITYLINER</b>	92-		D	V	<b>1853304.0</b>	118	304	140	30	26	91	M12	6	10
N116												x		
N116 H												150		
N116/3			D	V	<b>1861430.0</b>	200	430	235	45	39	131	M16	10	30
N116/3 H												x		
			D	V	<b>1870430.0</b>	203	430	235	45	39	131	M16	10	31
												x		
												150		
<b>CLUBSTAR</b>	98-		D	V	<b>1853377.2</b>	105	377	138	45	37	134	14.5	14	23
SB6000			T	V	<b>1853370.8</b>	176	377	201	45	37	139	M14	8	25
												x		
												150		
<b>ECONOMY</b>	98-		D-T	V	<b>1853324.0</b>	118	324	140	30	26	91	M12	6	11
LLANTA 17,5"												x		
												150		



A = DIAMETRO ACOPLAMIENTO      A = HUB DIAMETER  
 B = DIAMETRO EXTERIOR          B = EXTERIOR DIAMETER  
 C = ENTRECENTROS TALADRO      C = DISTANCE BETWEEN HOLES  
 D = ANCHO DEL DISCO              D = THICKNESS  
 E = ALTURA TOTAL                E = TOTAL HEIGHT  
 X = TALADROS                      X = HOLES  
 D-T = DELANTERO - TRASERO      D-T = FRONT - REAR  
 S-V = MACIZO - VENTILADO        S-V = SOLID - VENTED

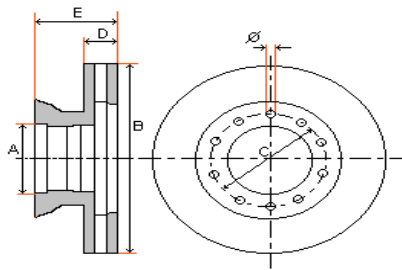
EDICION 06/2011

MODELO	AÑO	Observaciones	D	S	REF.	A	B	C	D	D	E	X		KG
			T	V	ADR98					MIN		Ø	Nº	

AUWATER														Autobús / Bus	
EUROLINER SB7000	92-		D	V	1861430.0	200	430	235	45	39	131	M16 x 150	10	30	
			D-T	V	1870430.0	203	430	235	45	39	131	M16 x 150	10	31	
EUROSTAR O404 (10-15R)	10/91-		D-T	V	1853438.0	195	438	235	45	37	135	M14 x 150	10	32	
JETLINER N407 N409	9/85-		D-T	V	1850459.0	170	459	195	48	46	119	M16	10	35	
JETLINER N212H N213H N213SHD N214H N214SHD	92-		D	V	1853304.0	118	304	140	30	26	91	M12 x 150	6	10	
			D-T	V	1861430.0	200	430	235	45	39	131	M16 x 150	10	30	
			D-T	V	1870430.0	203	430	235	45	39	131	M16 x 150	10	31	
N SERIES BUS N4008 - N4026	92-		D	V	1853304.0	118	304	140	30	26	91	M12 x 150	6	10	
			D	V	1861430.0	200	430	235	45	39	131	M16 x 150	10	30	
			D	V	1870430.0	203	430	235	45	39	131	M16 x 150	10	31	



EDICION 06/2011

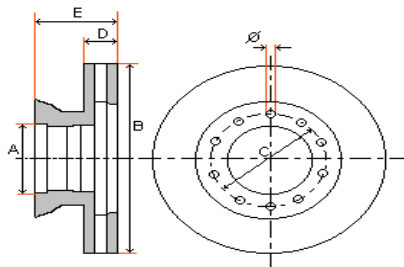


A = DIAMETRO ACOPLAMIENTO      A = HUB DIAMETER  
 B = DIAMETRO EXTERIOR          B = EXTERIOR DIAMETER  
 C = ENTRECENTROS TALADRO      C = DISTANCE BETWEEN HOLES  
 D = ANCHO DEL DISCO              D = THICKNESS  
 E = ALTURA TOTAL                E = TOTAL HEIGHT  
 X = TALADROS                      X = HOLES  
 D-T = DELANTERO - TRASERO      D-T = FRONT - REAR  
 S-V = MACIZO - VENTILADO        S-V = SOLID - VENTED

MODELO	AÑO	Observaciones	D T	S V	REF. ADR98	A	B	C	D	D MIN	E	X		KG
												Ø	Nº	

<b>AUWATER</b>	<b>Autobús / Bus</b>
----------------	----------------------

REGIOLINER	02-		D-T	V	1870430.0	203	430	235	45	39	131	M16 x 150	10	31
SKYLINER N122/3	-92		D	V	1861410.0	162	410	185	48	44	120	M16 x 150	12	32
SKYLINER N122/3	92-		D	V	1853304.0	118	304	140	30	26	91	M12 x 150	6	10
			D	V	1861430.0	200	430	235	45	39	131	M16 x 150	10	30
			D	V	1870430.0	203	430	235	45	39	131	M16 x 150	10	31
SPACELINER N117/2 N117/3	92-		D	V	1853304.0	118	304	140	30	26	91	M12 x 150	6	10
			D-T	V	1861430.0	200	430	235	45	39	131	M16 x 150	10	30
			D-T	V	1870430.0	203	430	235	45	39	131	M16 x 150	10	31

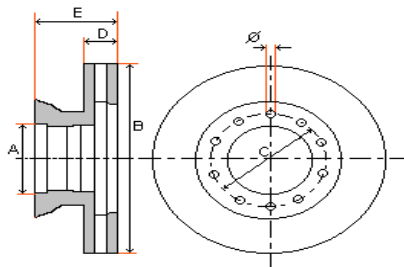


A = DIAMETRO ACOPLAMIENTO      A = HUB DIAMETER  
 B = DIAMETRO EXTERIOR          B = EXTERIOR DIAMETER  
 C = ENTRECENTROS TALADRO      C = DISTANCE BETWEEN HOLES  
 D = ANCHO DEL DISCO              D = THICKNESS  
 E = ALTURA TOTAL                E = TOTAL HEIGHT  
 X = TALADROS                      X = HOLES  
 D-T = DELANTERO - TRASERO      D-T = FRONT - REAR  
 S-V = MACIZO - VENTILADO       S-V = SOLID - VENTED

EDICION 06/2011

MODELO	AÑO	Observaciones	D	S	REF.	A	B	C	D	D	E	X		KG
			T	V	ADR98					MIN		Ø	Nº	

AUWATER														Autobús / Bus	
STARLINER SB7000	92-		D	V	1861430.0	200	430	235	45	39	131	M16 x 150	10	30	
			D	V	1870430.0	203	430	235	45	39	131	M16 x 150	10	31	
TEAMSTAR LLANTA 17,5"	98-		D-T	V	1853324.0	118	324	140	30	26	91	M12 x 150	6	10	
TRANSLINER N312 N316	92-		D	V	1853304.0	118	304	140	30	26	91	M12 x 150	6	10	
TRANSLINER N312 N316	92-		D	V	1861430.0	200	430	235	45	39	131	M16 x 150	10	30	
			D	V	1870430.0	203	430	235	45	39	131	M16 x 150	10	31	
TRANSLINER SHD 12M EJES MAN			D	V	1852438.0	200	438	235	45	40	135	M16 x 150	10	32	
TRANSLINER SHD 12M EJES MERCEDES			D-T	V	1853438.0	195	438	235	45	37	135	M14 x 150	10	32	



A = DIAMETRO ACOPLAMIENTO      A = HUB DIAMETER  
 B = DIAMETRO EXTERIOR          B = EXTERIOR DIAMETER  
 C = ENTRECENTROS TALADRO      C = DISTANCE BETWEEN HOLES  
 D = ANCHO DEL DISCO              D = THICKNESS  
 E = ALTURA TOTAL                E = TOTAL HEIGHT  
 X = TALADROS                      X = HOLES  
 D-T = DELANTERO - TRASERO      D-T = FRONT - REAR  
 S-V = MACIZO - VENTILADO       S-V = SOLID - VENTED

EDICION 06/2011

MODELO	AÑO	Observaciones	D T	S V	REF. ADR98	A	B	C	D	D MIN	E	X		KG
												Ø	Nº	

**AYATS** *Autobús / Bus*

ATLANTIS CHASIS INTEGRAL	01-		D-T	V	1870430.0	203	430	235	45	39	131	M16 x 150	10	31
ATLANTIS EJES MAN	02-		D-T	V	1852432.4	208	432	235	45	39	135	M16 x 150	10	35
BRAVO KNORR B EJES SCANIA	96-		D-T	V	1856430.8	208	430	237	45	37	131	M16 x 150	10	28
BRAVO CHASIS INTEGRAL	99-		D-T	V	1852432.4	203	430	235	45	39	131	M16 x 150	10	31

**BERKHOF** *Autobús / Bus*

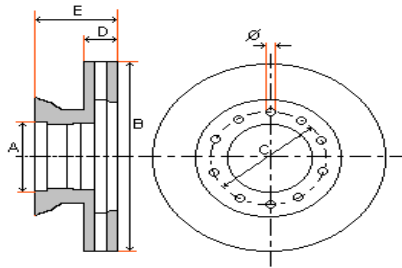
EXCELLENCE 3000 HD CHASIS SCANIA	96-		D-T	V	1856430.8	208	430	237	45	37	131	M16 x 150	10	28

**BEULAS** *Autobús / Bus*

EL MUNDO DOBLE DISCO	00-		D	V	1851417.2	159	417	186	28	26	67	18.5	10	16
MIDI STAR	9/00-		D-T	V	1851304.0	165	304	205	30	28	129	18.5 M10	6 2	13
STURGO DOBLE DISCO	00-		D	V	1851417.2	159	417	186	28	26	67	18.5	10	16



EDICION 06/2011



A = DIAMETRO ACOPLAMIENTO      A = HUB DIAMETER  
 B = DIAMETRO EXTERIOR          B = EXTERIOR DIAMETER  
 C = ENTRECENTROS TALADRO      C = DISTANCE BETWEEN HOLES  
 D = ANCHO DEL DISCO              D = THICKNESS  
 E = ALTURA TOTAL                E = TOTAL HEIGHT  
 X = TALADROS                      X = HOLES  
 D-T = DELANTERO - TRASERO      D-T = FRONT - REAR  
 S-V = MACIZO - VENTILADO       S-V = SOLID - VENTED

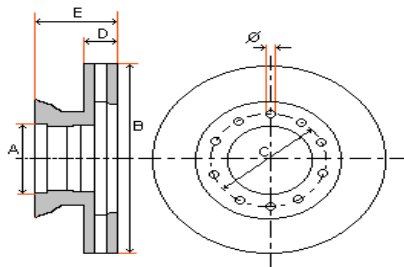
MODELO	AÑO	Observaciones	D T	S V	REF. ADR98	A	B	C	D	D MIN	E	X		KG
												Ø	Nº	

**B.M.C. Autobús / Bus**

518	97-		T	V	1852330.0	157	330	180	34	28	124	M12 x 150	12	17
FALCON 1100FE & BUS COLEGIO EJES MAN	03-		D	V	1852330.0	157	330	180	34	28	124	M12 x 150	12	17
FALCON 1100FE & BUS COLEGIO EJES VOLVO	03-		D	V	1857438.0	195	438	235	45	37	127	M16 x 150	10	35
PROBUS	97-		D	V	1852330.0	157	330	180	34	28	124	M12 x 150	12	17

**BOVA Autobús / Bus**

AXIAL DD138-430XE	97-		D-T	V	1870430.0	203	430	235	45	39	131	M16 x 150	10	31
FUTURA FHD	86-94		D	V	1850459.0	170	459	195	48	46	119	M16 x 200	10	25
FUTURA FHD EXC. 12.370	95-		D-T	V	1870430.0	203	430	235	45	39	131	M16 x 150	10	31
FUTURA FHD 12.370	95-		D	V	1861410.0	162	410	185	48	44	120	M16 x 150	12	32
FUTURA FVD	86-95		D-T	V	1850459.0	170	459	195	48	46	119	M16 x 200	10	25
MAGIC HD120-430XE	94-		D-T	V	1870430.0	203	430	235	45	39	131	M16 x 150	10	31



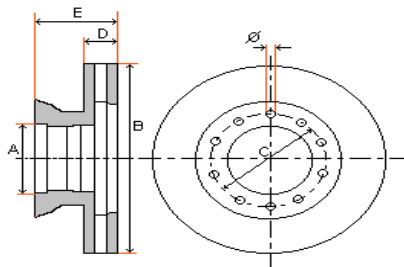
A = DIAMETRO ACOPLAMIENTO      A = HUB DIAMETER  
 B = DIAMETRO EXTERIOR          B = EXTERIOR DIAMETER  
 C = ENTRECENTROS TALADRO      C = DISTANCE BETWEEN HOLES  
 D = ANCHO DEL DISCO              D = THICKNESS  
 E = ALTURA TOTAL                E = TOTAL HEIGHT  
 X = TALADROS                      X = HOLES  
 D-T = DELANTERO - TRASERO      D-T = FRONT - REAR  
 S-V = MACIZO - VENTILADO       S-V = SOLID - VENTED

EDICION 06/2011

MODELO	AÑO	Observaciones	D T	S V	REF. ADR98	A	B	C	D	D MIN	E	X		KG
												Ø	Nº	

B.P.W.													Remolque / Trailer		
ECO-PLUS SB3745 SB6000	98-			V	1806375.6 1860340.6	290	377	335	45	41	160	23	10	28	
ECO-PLUS SB3745 SB6000 ALOJAMIENTO ABS	98-			V	1806375.8 1860340.4	290	377	335	45	41	160	23	10	28	
ECO-PLUS SB4345 SB7000	98-			V	1806430.3 1860350.5	290	430	335	45	37	160	23	10	32	
ECO-PLUS SB4345 SB7000 ALOJAMIENTO ABS	98-			V	1806430.1 1860350.1	290	430	335	45	37	160	23	10	32	
SKH CONVENCIONAL SB3745	-4/03			V	1806375.9 1860340.9	230	377	275	45	40	130	23	8	28	
SKH CONVENCIONAL SB3745 ALOJAMIENTO ABS	-4/03			V	1806375.3 1860340.3	230	377	275	45	40	130	23	8	28	
SKH CONVENCIONAL SB3745	-4/03			V	1806375.6 1860340.6	290	377	335	45	41	160	23	10	28	
SKH CONVENCIONAL SB3745 ALOJAMIENTO ABS	-4/03			V	1806375.8 1860340.4	290	377	335	45	41	160	23	10	28	
SKH CONVENCIONAL SB3745 ALOJAMIENTO ABS	-4/03			V	1806375.7 1860340.7	222	377	285	45	37	165	23	10	29	
SKH CONVENCIONAL SB3745	-4/03			V	1806375.5 1860340.8	290	377	335	45	40	170	23	10	30	
SKH CONVENCIONAL SB3745	5/03-			V	1806375.9 1860340.9	230	377	275	45	40	130	23	8	28	
SKH CONVENCIONAL SB3745 ALOJAMIENTO ABS	5/03-			V	1806375.3 1860340.3	230	377	275	45	40	130	23	8	28	
SKH CONVENCIONAL SB3745	5/03-			V	1806375.1 1860341.0		377	335	45	40	160	22.5	10	28	
SKH CONVENCIONAL SB3745 ALOJAMIENTO ABS	5/03-			V	1806375.3 1860340.3		377	335	45	40	160	22.5	10	28	
SKH CONVENCIONAL SB3745 ALOJAMIENTO ABS	5/03-			V	1806375.7 1860340.7	222	377	285	45	37	165	23	10	29	



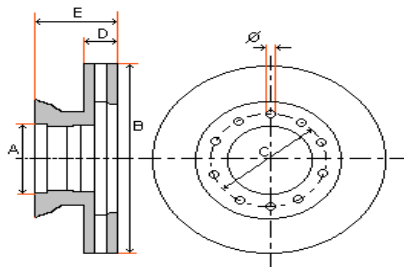


A = DIAMETRO ACOPLAMIENTO      A = HUB DIAMETER  
 B = DIAMETRO EXTERIOR          B = EXTERIOR DIAMETER  
 C = ENTRECENTROS TALADRO      C = DISTANCE BETWEEN HOLES  
 D = ANCHO DEL DISCO              D = THICKNESS  
 E = ALTURA TOTAL                E = TOTAL HEIGHT  
 X = TALADROS                        X = HOLES  
 D-T = DELANTERO - TRASERO      D-T = FRONT - REAR  
 S-V = MACIZO - VENTILADO        S-V = SOLID - VENTED

EDICION 06/2011

MODELO	AÑO	Observaciones	D T	S V	REF. ADR98	A	B	C	D	D MIN	E	X		KG
												Ø	Nº	

B.P.W.													Remolque / Trailer		
SKH ECOPLUS SB3745 ALOJAMIENTO ABS	-4/03			V	1806375.3 1806340.3	230	377	275	45	40	130	23	8	28	
SKH ECOPLUS SB3745	-4/03			V	1806375.6 1806340.6	290	377	335	45	41	160	23	10	28	
SKH ECOPLUS SB3745 ALOJAMIENTO ABS	-4/03			V	1806375.8 1806340.4	290	377	335	45	41	160	23	10	28	
SKH ECOPLUS SB3745	-4/03			V	1806375.1 1806341.0		377	335	45	40	160	22.5	10	28	
SKH ECOPLUS SB3745 ALOJAMIENTO ABS	-4/03			V	1806375.7 1806340.7	222	377	285	45	37	165	23	10	29	
SKH ECOPLUS SB3745	-4/03			V	1806375.5 1806340.8	290	377	335	45	40	170	23	10	30	
SKH ECOPLUS SB3745	5/03-			V	1806375.1 1806341.0		377	335	45	40	160	22.5	10	28	
SKH ECOPLUS SB3745 ALOJAMIENTO ABS	5/03-			V	1806375.2 1806341.3		377	335	45	40	160	22.5	10	28	
SKH ECOPLUS SB3745 ALOJAMIENTO ABS	5/03-			V	1806375.7 1806340.7	222	377	285	45	37	165	23	10	29	
SKH ECOPLUS 2 SB3745	9/07-			V	1806375.1 1806341.0		377	335	45	40	160	22.5	10	28	
SKH ECOPLUS 2 SB3745 ALOJAMIENTO ABS	9/07-			V	1806375.2 1806341.3		377	335	45	40	160	22.5	10	28	
SKH ECOPLUS 2 SB3745 ALOJAMIENTO ABS	9/07-			V	1806375.7 1806340.7	222	377	285	45	37	165	23	10	29	
SKH CONVENCIONAL SB4345	-4/03			V	1806430.3 1806350.5	290	430	335	45	37	160	23	10	32	
SKH CONVENCIONAL SB4345 ALOJAMIENTO ABS	-4/03			V	1806430.1 1806350.1	290	430	335	45	37	160	23	10	32	
SKH CONVENCIONAL SB4345	5/03-			V	1806430.5 1806350.5		430	335	45	40	160	22.5	10	32	



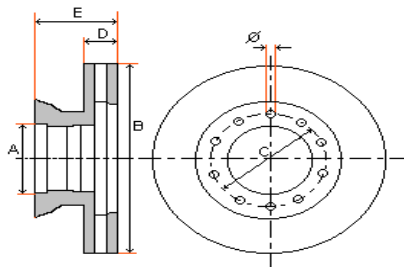
A = DIAMETRO ACOPLAMIENTO      A = HUB DIAMETER  
 B = DIAMETRO EXTERIOR          B = EXTERIOR DIAMETER  
 C = ENTRECENTROS TALADRO      C = DISTANCE BETWEEN HOLES  
 D = ANCHO DEL DISCO              D = THICKNESS  
 E = ALTURA TOTAL                E = TOTAL HEIGHT  
 X = TALADROS                      X = HOLES  
 D-T = DELANTERO - TRASERO      D-T = FRONT - REAR  
 S-V = MACIZO - VENTILADO       S-V = SOLID - VENTED

EDICION 06/2011

MODELO	AÑO	Observaciones	D T	S V	REF. ADR98	A	B	C	D	D MIN	E	X		KG
												Ø	Nº	

**B.P.W.** *Remolque / Trailer*

SKH CONVENCIONAL SB4345 ALOJAMIENTO ABS	5/03			V	1806430.1 1806350.1	290	430	335	45	37	160	23	10	32
SH ECOPLUS SB4345	-4/03			V	1806430.3 1806350.5	290	430	335	45	37	160	23	10	32
SH ECOPLUS SB4345	5/03-			V	1806430.5 1806350.5		430	335	45	40	160	22.5	10	32
SH ECOPLUS 2 SB4345	9/07-			V	1806430.5 1806350.5		430	335	45	40	160	22.5	10	32
SH ECOPLUS 2 SB4309	5/03-			V	1806430.5 1806350.5		430	335	45	40	160	22.5	10	32



A = DIAMETRO ACOPLAMIENTO      A = HUB DIAMETER  
 B = DIAMETRO EXTERIOR          B = EXTERIOR DIAMETER  
 C = ENTRECENTROS TALADRO      C = DISTANCE BETWEEN HOLES  
 D = ANCHO DEL DISCO              D = THICKNESS  
 E = ALTURA TOTAL                E = TOTAL HEIGHT  
 X = TALADROS                        X = HOLES  
 D-T = DELANTERO - TRASERO      D-T = FRONT - REAR  
 S-V = MACIZO - VENTILADO        S-V = SOLID - VENTED

EDICION 06/2011

MODELO	AÑO	Observaciones	D	S	REF.	A	B	C	D	D	E	X		KG
			T	V	ADR98					MIN		Ø	Nº	

**CAETANO** *Autobús / Bus*

ENIGMA EJES MAN	1/01-		D-T	V	1852432.0	208	433	235	45	39	135	M16 x 150	10	34
ENIGMA 12M EJES DENNIS	1/01-		D	V	1870430.2	135	430	165	45	39	105	15 M14	14 2	31
			T	V	1870430.0	203	430	235	45	39	131	M16 x 150	10	31
ENIGMA 12M EJES VOLVO	12/99-		D-T	S	1857434.2	220	434		45	41	45			35
			D-T	V	1857434.1	220	434		45	41	45			35

**CARDI** *Remolque / Trailer*

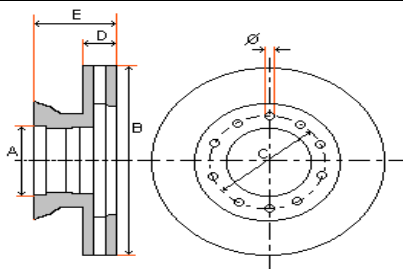
SEMI-REMOLQUE EJES MERCEDES	1/98-			V	1853430.8	211	430	238	45	37	132	M14 x 150	10	30

**CASE** *Maquinaria O.P.*

				S	1880458.0	180	458	210	13		13	16.5	10	12
				S	1880500.0	205	500	245	16	13	42	15	6	20



EDICION 06/2011



A = DIAMETRO ACOPLAMIENTO      A = HUB DIAMETER  
 B = DIAMETRO EXTERIOR          B = EXTERIOR DIAMETER  
 C = ENTRECENTROS TALADRO      C = DISTANCE BETWEEN HOLES  
 D = ANCHO DEL DISCO              D = THICKNESS  
 E = ALTURA TOTAL                E = TOTAL HEIGHT  
 X = TALADROS                      X = HOLES  
 D-T = DELANTERO - TRASERO      D-T = FRONT - REAR  
 S-V = MACIZO - VENTILADO       S-V = SOLID - VENTED

MODELO	AÑO	Observaciones	D T	S V	REF. ADR98	A	B	C	D	D MIN	E	X		KG
												Ø	Nº	

<b>CARTERPILLAR</b>	<b>Maquinaria O.P.</b>
---------------------	------------------------

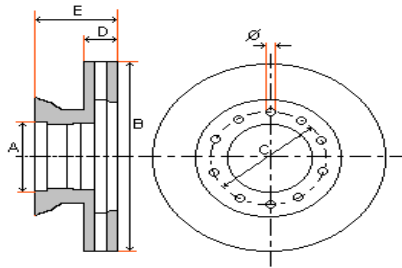
				S	1880466.0	195	466	226	16	13	20	17	12	20
				S	1880477.0	216	477	244	13		13	19	20	17
				S	1880482.0	246.8	482	279	13		13	17	24	15

<b>DAEWO</b>	<b>Camión</b>
--------------	---------------

A60 A75 A80	1/97-		D	V	1850314.0	119	314	138	26	24	122	M12 x 175	10	13
D60 D75 D80 D95 D75 D80 D95	10/00-													



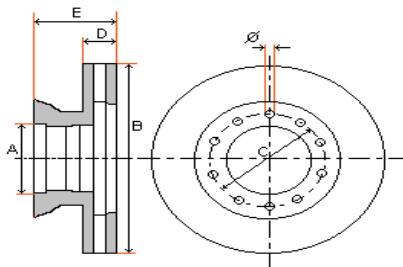
EDICION 06/2011



A = DIAMETRO ACOPLAMIENTO      A = HUB DIAMETER  
 B = DIAMETRO EXTERIOR      B = EXTERIOR DIAMETER  
 C = ENTRECENTROS TALADRO      C = DISTANCE BETWEEN HOLES  
 D = ANCHO DEL DISCO      D = THICKNESS  
 E = ALTURA TOTAL      E = TOTAL HEIGHT  
 X = TALADROS      X = HOLES  
 D-T = DELANTERO - TRASERO      D-T = FRONT - REAR  
 S-V = MACIZO - VENTILADO      S-V = SOLID - VENTED

MODELO	AÑO	Observaciones	D	S	REF.	A	B	C	D	D	E	X		KG
			T	V	ADR98					MIN		Ø	Nº	

DAF													Camión		
<b>45 SERIES (6.2-7,5 Tn)</b> FA45.120 FA45.150 FA45.160	91-01		D	V	<b>1850314.0</b>	119	314	138	26	24	122	M12 x 175	10	13	
<b>45 SERIES (10-11 Tn)</b> FA45.130 FA45.150 FA45.160 FA45.180 FA45.210	91-01		D	V	<b>1850311.0</b>	133	311	155	30	27	137	M12 x 175	12	14	
<b>50 SERIES</b> FA50.130 FA50.150 FA50.160 FA50.180	93-02		D	V	<b>1850375.0</b>	155	375	185	44	40	128	M14 x 150	10	22	
<b>55 SERIES</b> FA55.150 FA55.160 FA55.180 FA55.210 FA55.230	95-02		D	V	<b>1850375.0</b>	155	375	185	44	40	128	M14 x 150	10	22	
<b>CF SERIES</b> CF65 CF75 CF85 CF95	1/98-		D-T	V	<b>1850432.1</b>	258	432			45	37	45		22	
<b>FA SERIES</b> FA600 FA800 FA1000 FA1005	87-91		D	V	<b>1850314.0</b>	119	314	138	26	24	122	M12 x 175	10	13	
			D	V	<b>1850311.0</b>	133	311	155	30	27	137	M12 x 175	12	14	
<b>LF45 SERIES</b> (Excepto ejes 12 Tn) PAN17 Llanta 17.5"	1/01-		D	V	<b>1850330.1</b>	117	330	138	34	31	123	M12 x 175	12	20	
			T	V	<b>1850330.3</b>	150	330	175	34	31	119	M12 x 175	12	20	



A = DIAMETRO ACOPLAMIENTO      A = HUB DIAMETER  
 B = DIAMETRO EXTERIOR          B = EXTERIOR DIAMETER  
 C = ENTRECENTROS TALADRO      C = DISTANCE BETWEEN HOLES  
 D = ANCHO DEL DISCO              D = THICKNESS  
 E = ALTURA TOTAL                  E = TOTAL HEIGHT  
 X = TALADROS                        X = HOLES  
 D-T = DELANTERO - TRASERO      D-T = FRONT - REAR  
 S-V = MACIZO - VENTILADO        S-V = SOLID - VENTED

EDICION 06/2011

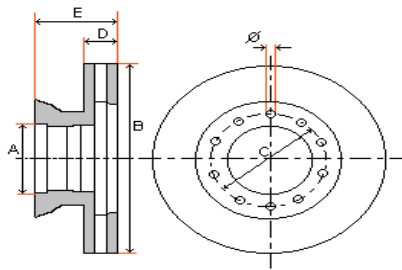
MODELO	AÑO	Observaciones	D	S	REF.	A	B	C	D	D	E	X		KG
			T	V	ADR98					MIN		Ø	Nº	

**DAF** **Camión**

<b>LF45 SERIES (12Tn)</b> PAN17 Llanta 17.5" <i>CON DENTADO ABS</i> <i>Delantero y Trasero</i>	1/01-		D	V	<b>1850330.2</b>	133	330	155	34	31	143	M12	16	22
			T	V	<b>1850330.3</b>	150	330	175	34	31	119	M12	12	20
<b>LF55 SERIES (12-18Tn)</b> PAN19 y PAN 19-1 Plus Llanta de 19.5"	1/02- -2/03 2/03-		D	V	<b>1850375.2</b>	117	375	144	45	40	99	15	10	25
			T	V	<b>1850375.4</b>	179	375	210	45	40	146	M14	10	26
<b>LF55 SERIES (21Tn)</b> Llanta 22.5"	1/98-		D-T	V	<b>1850432.1</b>	258	432		45	37	45			22
<b>SB SERIES</b> SB120 SB200	8/02-		D	V	<b>1850377.1</b>	169	377	196	45	37	138	M14	8	30
			T	V	<b>1850377.0</b>	117	377	144	45	37	112	15	10	27
<b>XF95 SERIES</b> Llanta 22.5"	1/98-		D-T	V	<b>1850432.5</b>	258	432		45	37	45			22



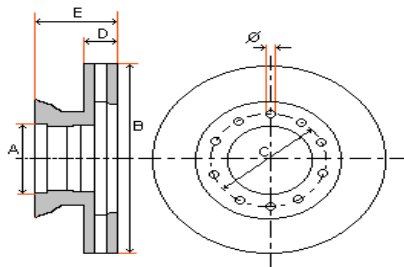
EDICION 06/2011



A = DIAMETRO ACOPLAMIENTO      A = HUB DIAMETER  
 B = DIAMETRO EXTERIOR          B = EXTERIOR DIAMETER  
 C = ENTRECENROS TALADRO        C = DISTANCE BETWEEN HOLES  
 D = ANCHO DEL DISCO              D = THICKNESS  
 E = ALTURA TOTAL                E = TOTAL HEIGHT  
 X = TALADROS                      X = HOLES  
 D-T = DELANTERO - TRASERO      D-T = FRONT - REAR  
 S-V = MACIZO - VENTILADO       S-V = SOLID - VENTED

MODELO	AÑO	Observaciones	D	S	REF. ADR98	A	B	C	D	D MIN	E	X		KG
			T	V								Ø	Nº	

DAF													Autobús		
DHT	1/84-		D	V	1850459.0	170	459	195	48	46	119	M16 x 200	10	35	
DKSB DKV DKZ	1/87-		D	V	1850459.0	170	459	195	48	46	119	M16 x 200	10	35	
FHD FHD15.430	82-86		D	V	1850459.0	170	459	195	48	46	119	M16 x 200	10	35	
FHD			D	V	1863406.0	194	406	215	48	38	175	M16 x 150	10	30	
FHD FHD15.430	1/92-		D	V	1870430.0	203	430	235	45	39	131	M16 x 150	10	31	
FHD SB6000	1/96-		D	V	1861410.0	162	410	185	48	44	120	M16 x 150	12	32	
FHD SB7000	1/92-		D-T	V	1861430.0	200	430	235	45	39	131	M16 x 150	10	30	
FHX - FLD FHX15.420 FLD15.370	89-		D	V	1850459.0	170	459	195	48	46	119	M16 x 200	10	35	
			D	V	1870430.0	203	430	235	45	39	131	M16 x 150	10	31	
MB220 MB230	1/87-		D	V	1850459.0	170	459	195	48	46	119	M16 x 200	10	35	
SB120 SB200 COACHES	8/02-		D	V	1850377.1	169	377	196	45	37	138	M14 x 150	8	30	
			T	V	1850377.0	117	377	144	45	37	112	15 M14	10 2	27	
SB2300 SB2300 DHTD, DHS	1/86-		D	V	1850459.0	170	459	195	48	46	119	M16 x 200	10	35	
			D	V	1870430.0	203	430	235	45	39	131	M16 x 150	10	31	



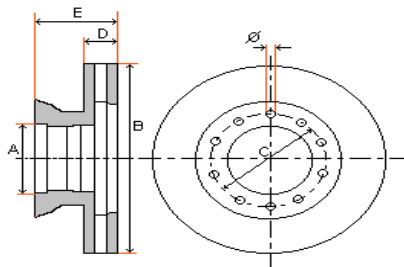
A = DIAMETRO ACOPLAMIENTO      A = HUB DIAMETER  
 B = DIAMETRO EXTERIOR          B = EXTERIOR DIAMETER  
 C = ENTRECENTROS TALADRO      C = DISTANCE BETWEEN HOLES  
 D = ANCHO DEL DISCO              D = THICKNESS  
 E = ALTURA TOTAL                E = TOTAL HEIGHT  
 X = TALADROS                        X = HOLES  
 D-T = DELANTERO - TRASERO      D-T = FRONT - REAR  
 S-V = MACIZO - VENTILADO        S-V = SOLID - VENTED

EDICION 06/2011

MODELO	AÑO	Observaciones	D	S	REF.	A	B	C	D	D	E	X		KG
			T	V	ADR98					MIN		Ø	Nº	

DAF															Autobús		
SB2305 SB2305 DHTD, DHS	1/87-		D	V	1850459.0	170	459	195	48	46	119	M16 x 200	10	35			
SB2705 SB2705 DHTD, DHS	1/87-		D	V	1850459.0	170	459	195	48	46	119	M16 x 200	10	35			
SB3000 SB3000 DKSB, DKV SB3000 DKZ, DSKB	1/89-		D	V	1850459.0	170	459	195	48	46	119	M16 x 200	10	35			
			D	V	1870430.0	203	430	235	45	39	131	M16 x 150	10	31			
SBG220 SBG220 LB, LT	1/86-		D	V	1850459.0	170	459	195	48	46	119	M16 x 200	10	35			
SBR3000 SBR3000 DKZ, DSKB	1/89-		D	V	1850459.0	170	459	195	48	46	119	M16 x 200	10	35			
			D	V	1870430.0	203	430	235	45	39	131	M16 x 150	10	31			
SKB3000	1/89-		D	V	1850459.0	170	459	195	48	46	119	M16 x 200	10	35			
			D	V	1870430.0	203	430	235	45	39	131	M16 x 150	10	31			
SB4000	1/99-		D-T	V	1850432.1	258	432		45	37	45			22			
SWIFT	1/87-		D	V	1850311.0	133	311	155	30	27	137	M12 x 175	12	14			





A = DIAMETRO ACOPLAMIENTO      A = HUB DIAMETER  
 B = DIAMETRO EXTERIOR          B = EXTERIOR DIAMETER  
 C = ENTRECENROS TALADRO      C = DISTANCE BETWEEN HOLES  
 D = ANCHO DEL DISCO            D = THICKNESS  
 E = ALTURA TOTAL                E = TOTAL HEIGHT  
 X = TALADROS                      X = HOLES  
 D-T = DELANTERO - TRASERO    D-T = FRONT - REAR  
 S-V = MACIZO - VENTILADO      S-V = SOLID - VENTED

EDICION 06/2011

MODELO	AÑO	Observaciones	D	S	REF.	A	B	C	D	D	E	X		KG
			T	V	ADR98					MIN		Ø	Nº	

<b>DEMAG</b>	<b>Maquinaria O.P.</b>
--------------	------------------------

				S	<b>1880492.0</b>	220	492	245	26		48	19	16	25

<b>DEN OUDSTEN</b>	<b>Autobús</b>
--------------------	----------------

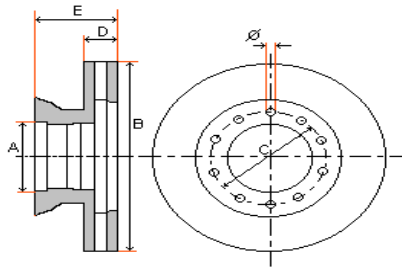
<b>ALMERE CITY BUS</b>	1/99-			V	<b>1826430.1</b> <b>1826900.4</b>	222	434	250	45	40	150	M16 x 200	10	40
<b>SB3000</b>	1/89-			D	<b>1850459.0</b>	170	459	195	48	46	119	M16 x 200	10	35

<b>DENNIS</b>	<b>Camión</b>
---------------	---------------

<b>R SERIES</b> R300 R345 R420	1/99-			D	<b>1870430.2</b>	135	430	165	45	39	105	15 M14	14 2	31
				T	<b>1870430.0</b>	203	430	235	45	39	131	M16 x 150	10	31
<b>ENVIRO 400</b>	04-			D	<b>1870430.2</b>	135	430	165	45	39	105	15 M14	14 2	31
<b>ENVIRO 500</b>	02-			D	<b>1870430.2</b>	135	430	165	45	39	105	15 M14	14 2	31
<b>PANTHER</b>	01-			D	<b>1870430.2</b>	135	430	165	45	39	105	15 M14	14 2	31
<b>R SERIES</b> R300 R345 R420	1/01-			D	<b>1870430.2</b>	135	430	165	45	39	105	15 M14	14 2	31
<b>TRIDENT II</b> Llanta 22.5"				T	<b>1870430.0</b>	203	430	235	45	39	131	M16 x 150	10	31



EDICION 06/2011



A = DIAMETRO ACOPLAMIENTO      A = HUB DIAMETER  
 B = DIAMETRO EXTERIOR          B = EXTERIOR DIAMETER  
 C = ENTRECENTROS TALADRO      C = DISTANCE BETWEEN HOLES  
 D = ANCHO DEL DISCO              D = THICKNESS  
 E = ALTURA TOTAL                E = TOTAL HEIGHT  
 X = TALADROS                      X = HOLES  
 D-T = DELANTERO - TRASERO      D-T = FRONT - REAR  
 S-V = MACIZO - VENTILADO        S-V = SOLID - VENTED

MODELO	AÑO	Observaciones	D	S	REF.	A	B	C	D	D	E	X		KG
			T	V	ADR98					MIN		Ø	Nº	

**DRESSER** *Maquinaria O.P.*

				S	1880457.0	198	457	225	13		13	17	16	12
340			T	S	1880477.0	216	477	244	13		13	19	20	17

**E.R.F.** *Camión*

ECL, ECM, ECS, ECT ECX,	99-		D-T	V	1852377.5	106	377	144	45	38	110	17	12	15

**ESKER TOURING** *Autobús*

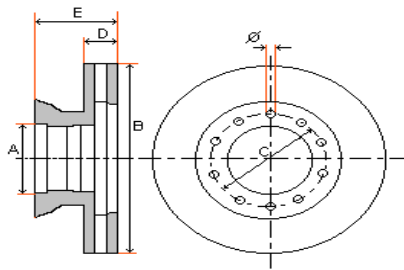
TOURING LLANTA 19.5"	96-		D	V	1853377.2	105	377	138	45	37	134	14.5	14	23
			T	V	1853370.8	176	377	201	45	37	139	M14 x 150	8	25

**EUCLID** *Maquinaria O.P.*

R35				S	1880635.0	355.5	635	387	19		19	20	26	35
R85				S	1880101.5	559.6	1015	635	25.3		25.3	32.5	18	100

**FAUN** *Maquinaria O.P.*

				S	1880492.0	220	492	245	26		48	19	16	25



A = DIAMETRO ACOPLAMIENTO      A = HUB DIAMETER  
 B = DIAMETRO EXTERIOR          B = EXTERIOR DIAMETER  
 C = ENTRECENTROS TALADRO      C = DISTANCE BETWEEN HOLES  
 D = ANCHO DEL DISCO              D = THICKNESS  
 E = ALTURA TOTAL                E = TOTAL HEIGHT  
 X = TALADROS                      X = HOLES  
 D-T = DELANTERO - TRASERO      D-T = FRONT - REAR  
 S-V = MACIZO - VENTILADO       S-V = SOLID - VENTED

EDICION 06/2011

MODELO	AÑO	Observaciones	D T	S V	REF. ADR98	A	B	C	D	D MIN	E	X		KG
												Ø	Nº	

FODEN													Camión		
-------	--	--	--	--	--	--	--	--	--	--	--	--	--------	--	--

	1/98-		D-T	V	1850432.1	258	432		45	37	45			22

FONTENAC													Remolque / Trailer		
----------	--	--	--	--	--	--	--	--	--	--	--	--	--------------------	--	--

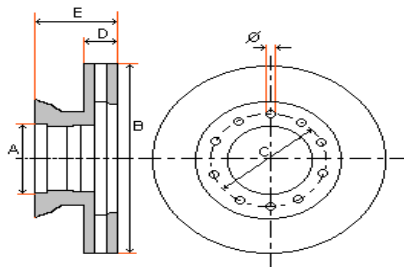
LLANTA 17,5" EJE RENAULT				V	1854375.0	222	375	275	45	38	166	22.5	8	28
LLANTA 22,5" EJE MERCEDES				V	1853430.8	211	430	238	45	37	132	M14 x 150	10	30

FORD													Vehiculo ligero		
------	--	--	--	--	--	--	--	--	--	--	--	--	-----------------	--	--

TRANSIT FWD 260-280-300-330-350 CON ABS Y PERNOS	00-06		D	V	1851370.0	215	377	275	45	37	151	20 M10	8 2	34
TRANSIT FWD 260-280-300-330-350	00-06		D	V	1859294.0	82	294	100	24.5	22	43.2	M10 x 150	5	8
TRANSIT RWD 330 CON PERNOS	1/00-				1851377.0	215	377	275	45	37	151	22 M10	8 2	34

FRUEHAUF													Remolque / Trailer		
----------	--	--	--	--	--	--	--	--	--	--	--	--	--------------------	--	--

SB6000 CON ABS				V	1810370.1 1832815.7	169	377	195	45	37	138	M14 x 150	8	25
SB7000 CON ABS				V	1810430.1 1810430.7	280	430	335	45	37	155	26.5	10	34



A = DIAMETRO ACOPLAMIENTO      A = HUB DIAMETER  
 B = DIAMETRO EXTERIOR          B = EXTERIOR DIAMETER  
 C = ENTRECENTROS TALADRO      C = DISTANCE BETWEEN HOLES  
 D = ANCHO DEL DISCO              D = THICKNESS  
 E = ALTURA TOTAL                E = TOTAL HEIGHT  
 X = TALADROS                        X = HOLES  
 D-T = DELANTERO - TRASERO      D-T = FRONT - REAR  
 S-V = MACIZO - VENTILADO       S-V = SOLID - VENTED

EDICION 06/2011

MODELO	AÑO	Observaciones	D T	S V	REF. ADR98	A	B	C	D	D MIN	E	X		KG
												Ø	Nº	

**GIGANT** *Remolque / Trailer*

DH5-DH6-DOH6-DN6 DNH6-DKH1-DNKH1 SB4345				V	1831706.6 1831703.5	290	430	335	45	37	160	23	10	28
DH5-DH6-DOH6-DN6 DNH6-DKH1-DNKH1 SB3745				V	1831706.3		377	335	45			23	10	25
EURO EJE SB4345				V	1831708.6		430	335	45				10	28
DH4 - 05506 SB3334				V	1831703.8 1831703.7		334	205	34			21	6	14
EJES MERITOR			T	S	1831434.0	260	434	335	45	40	162	32.5	10	45

**GRANNING LYNX** *Remolque / Trailer*

SB5000	1/00-			V	1853335.4	145	335	177	34	28	111	M12 x 150	8	14
SB6000	1/00-			V	1853370.8	176	377	201	45	37	139	M14 x 150	8	25
SB7000	1/00-			V	1853430.8	211	430	238	45	37	132	M14 x 150	10	30

**GROVE** *Maquinaria O.P.*

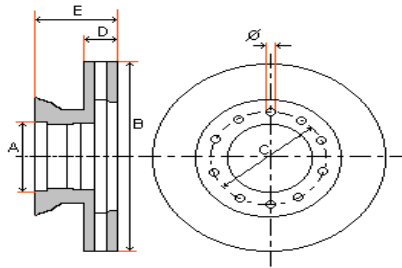
				S	1880492.0	220	492	245	26		48	19	16	25
--	--	--	--	---	-----------	-----	-----	-----	----	--	----	----	----	----

**HANOMAG** *Maquinaria O.P.*

				S	1870460.0	198	460	225	20		50	17	16	18
				S	1870490.0	205	490	225	22		40	19	20	30



EDICION 06/2011



A = DIAMETRO ACOPLAMIENTO      A = HUB DIAMETER  
 B = DIAMETRO EXTERIOR          B = EXTERIOR DIAMETER  
 C = ENTRECENTROS TALADRO      C = DISTANCE BETWEEN HOLES  
 D = ANCHO DEL DISCO              D = THICKNESS  
 E = ALTURA TOTAL                E = TOTAL HEIGHT  
 X = TALADROS                      X = HOLES  
 D-T = DELANTERO - TRASERO      D-T = FRONT - REAR  
 S-V = MACIZO - VENTILADO        S-V = SOLID - VENTED

MODELO	AÑO	Observaciones	D T	S V	REF. ADR98	A	B	C	D	D MIN	E	X		KG
												Ø	Nº	

**HENDRICKSON** *Remolque / Trailer*

SB6000				V	1853370.8	176	377	201	45	37	139	M14 x 150	8	25
SB7000				V	1853430.8	211	430	238	45	37	132	M14 x 150	10	30

**HEULIEZ** *Autobús*

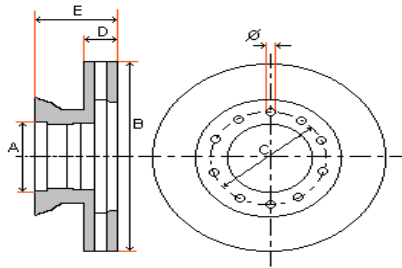
ALPHA RANGE	1/98-		D-T	V	1850432.1	258	432		45	37	45			22

**IPV** *Camión*

F2000 EJES MAN CON ABS			D-T	V	1852432.4	208	432	235	45	39	135	M16 x 150	10	35



EDICION 06/2011

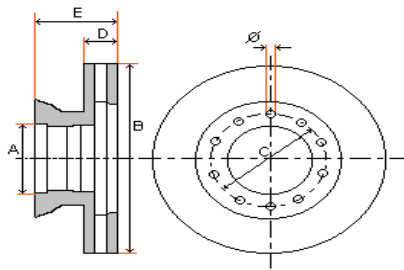


A = DIAMETRO ACOPLAMIENTO      A = HUB DIAMETER  
 B = DIAMETRO EXTERIOR          B = EXTERIOR DIAMETER  
 C = ENTRECENTROS TALADRO      C = DISTANCE BETWEEN HOLES  
 D = ANCHO DEL DISCO              D = THICKNESS  
 E = ALTURA TOTAL                E = TOTAL HEIGHT  
 X = TALADROS                      X = HOLES  
 D-T = DELANTERO - TRASERO      D-T = FRONT - REAR  
 S-V = MACIZO - VENTILADO       S-V = SOLID - VENTED

MODELO	AÑO	Observaciones	D T	S V	REF. ADR98	A	B	C	D	D MIN	E	X		KG
												Ø	Nº	

**ISUZU** *Vehiculo ligero*

NKR 2.8D NKR55 MOTOR 4JB1	12/93-		D	V	1859265.0	104	265	142	35	33	80	M14 x 150	6	10
NKR 3.1D NKR69 MOTOR4JG2	7/96-		D	V	1859282.0	110	282	136	35	35	62.5	12.1	12	10
NKR 3.0D 3,5 TON. MOTOR 4JH1	1/98-		D	V	1859265.0	104	265	142	35	33	80	M14 x 150	6	10
			D	V	1859293.0	110	293	136	40	37	57.5	12.1	12	12
NPR 3.0DT NKR77 MOTOR 4JH1	3/03-		D	V	1859293.0	110	293	136	40	37	57.5	12.1	12	12
NPR 3.0DT 5.0TON. MOTOR 4JH1	1/98-		D	V	1859293.0	110	293	136	40	37	57.5	12.1	12	12
NPR 3.0DT NPR77 MOTOR 4JH1	1/03-		D	V	1859293.0	110	293	136	40	37	57.5	12.1	12	12
NPR 3.9DT NPR65 MOTOR 4BD2	7/96-		D	V	1859282.0	110	282	136	35	35	62.5	12.1	12	10
NPR 4.8DT 6,2 TON MOTOR 4HE1	1/03-		D	V	1859293.0	110	293	136	40	37	57.5	12.1	12	12
NPR 5.2DT NPR70 MOTOR 4HE1	1/03-		D	V	1859293.0	110	293	136	40	37	57.5	12.1	12	12
NQR 4.8DT 7,5 TON MOTOR 4HE1-XS NQR70	6/96-		D	V	1859310.0	110	310	136	42	39	55	12.1	12	10
			D	V	1859310.2	110	310	136	42	39	55	12.2	12	12
NQR 5.2DT NQR75 MOTOR 4HK1	1/03-		D	V	1859293.0	110	293	136	40	37	57.5	12.1	12	12
NQR 7,5-11 TON MOTOR 4HE1-XS	1/03-		D	V	1859293.0	110	293	136	40	37	57.5	12.1	12	12



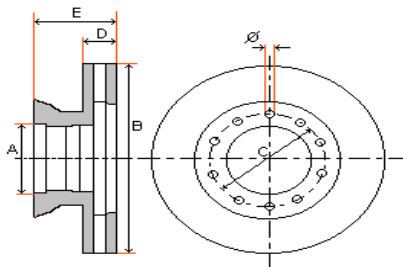
A = DIAMETRO ACOPLAMIENTO      A = HUB DIAMETER  
 B = DIAMETRO EXTERIOR          B = EXTERIOR DIAMETER  
 C = ENTRECENTROS TALADRO      C = DISTANCE BETWEEN HOLES  
 D = ANCHO DEL DISCO              D = THICKNESS  
 E = ALTURA TOTAL                E = TOTAL HEIGHT  
 X = TALADROS                        X = HOLES  
 D-T = DELANTERO - TRASERO      D-T = FRONT - REAR  
 S-V = MACIZO - VENTILADO        S-V = SOLID - VENTED

EDICION 06/2011

MODELO	AÑO	Observaciones	D	S	REF.	A	B	C	D	D	E	X		KG
			T	V	ADR98					MIN		Ø	Nº	

<b>IVECO - FIAT</b>	<i>Vehiculo ligero</i>
---------------------	------------------------

<b>DAILY &amp; GRINTA</b> 28.8-30.8-32.8-35.9 <i>CON PERNOS</i>	78-96		D	S	<b>1851267.1</b>	115	267	170 95 72	14.2	12.8	111	M18 12.8 M6	6 6 3	10	
	<b>DAILY &amp; GRINTA</b> 28.8-30.8-32.8-35.9 <i>CON PERNOS</i>	89-96		D	S	<b>1851267.2</b>	115	267	170 95 72	14.2	12.8	154	M18 12.8 M6	6 6 3	13
<b>DAILY-GRINTA TURBO</b> 28.8-30.8-32.8-35.9 <i>CON PERNOS</i>	78-96		D	S	<b>1851267.1</b>	115	267	170 95 72	14.2	12.8	111	M18 12.8 M6	6 6 3	10	
	<b>DAILY-GRINTA TURBO</b> 35-40-45-49 (.10 y .12) <i>CON PERNOS</i>	78-96		D	S	<b>1851280.1</b>	105	280	170 85 72	16	14	136	M18 12.8 M6	6 6 3	14
<b>DAILY TURBO</b> 35-40-45-49 (.10 y .12) <i>CON PERNOS</i>	90-96		D	S	<b>1851280.3</b>	124	280	170 85 72	22	19	143	M18 12.4 M6	6 6 3	17	
<b>DAILY TURBO</b> 50.12, 59.12 <i>CON PERNOS</i>	92-96		D	V	<b>1851290.1</b>	120	290	205 100	25	23	153	M18 12.5	6 6	20	
<b>DAILY II (NEW DAILY)</b> 30.8, 40.8 <i>CON PERNOS</i>	96-99		D	S	<b>1851267.2</b>	115	267	170 95 72	14.2	12.8	154	M18 12.8 M6	6 6 3	13	
	96-99		D	S	<b>1851290.2</b>	125	290	170 95	22	19	111	M18 12.6	6 6	18	
			T	S	<b>1851290.3</b>	84	290	108	22	19	85	10.5	8	17	
<i>CON PERNOS</i>															
<b>DAILY II (NEW DAILY)</b> 40.10, 45.10 <i>CON PERNOS</i>	1/97		D	S	<b>1851280.1</b>	105	280	170 85 72	16	14	136	M18 12.8 M6	6 6 3	14	
	99-06		D	S	<b>1851276.0</b>	73	276	118	22	19	72	15.6 8.7	5 2	6	
			T	S	<b>1851276.2</b>	73	276	118	16	14	69	15.6 8.7	5 2	5	
<i>CON PERNOS</i>		T	S	<b>1851276.1</b>	73	276	118	16	14	69	15.6 8.7	5 2	5		
<b>DAILY III (CITY 2000)</b> 35C9,C10,C11,C12,C13 35S9,S11,S11G,S12 40C11G,C12,C14,C17	99-06		D	S	<b>1851290.5</b>	123	290	170 95	22	19	111	M18 12.5	6 6	18	
			D	S	<b>1851290.2</b>	125	290	170 95	22	19	111	M18 12.6	6 6	18	
			T	S	<b>1851290.3</b>	84	290	108	22	19	85	10.5	8	17	



A = DIAMETRO ACOPLAMIENTO      A = HUB DIAMETER  
 B = DIAMETRO EXTERIOR          B = EXTERIOR DIAMETER  
 C = ENTRECENTROS TALADRO      C = DISTANCE BETWEEN HOLES  
 D = ANCHO DEL DISCO              D = THICKNESS  
 E = ALTURA TOTAL                E = TOTAL HEIGHT  
 X = TALADROS                        X = HOLES  
 D-T = DELANTERO - TRASERO      D-T = FRONT - REAR  
 S-V = MACIZO - VENTILADO        S-V = SOLID - VENTED

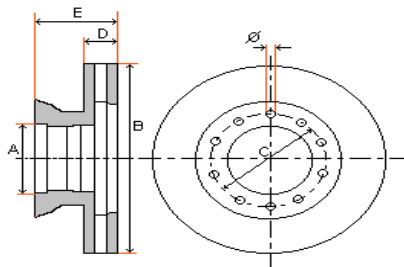
EDICION 06/2011

MODELO	AÑO	Observaciones	D	S	REF. ADR98	A	B	C	D	D MIN	E	X		KG
			T	V								Ø	Nº	

<b>IVECO - FIAT</b>	<i>Vehículo ligero</i>
---------------------	------------------------

<b>DAILY III (CITY 2000)</b> 60C11G,C13,C1713 65C11,C11G,C13,C15	00-06		D	V	<b>1851290.6</b>	80	290	110	26	23	53	12.5	9	5
			T	S	<b>1851306.0</b>	178	306	215	22	18	136	M10	6	15
<b>DAILY IV</b> 29L9,L10,L12,L14 35S10,S12,S14,S15,	6/06-		D	S	<b>1851300.0</b>	78	300	125	28	25	74.5	15.6 8.7	6 1	9
			T	S	<b>1851296.0</b>	76	296	125	16	13	69.5	15.6 8.7	6 1	8
			T	S	<b>1851296.0</b>	76	296	125	16	13	69.5	15.6 8.7	6 1	8
<b>DAILY IV</b> 35C10,C12,C14 C15,C18	6/06-		D	V	<b>1851290.8</b>	74	290	95	28	25	46	12.5	9	9
			T	V	<b>1851294.0</b>	84	294	108	24	21	87.5		8	
			T	S	<b>1851290.3</b>	84	290	108	22	19	85	10.5	8	17
<b>DAILY IV</b> 40C10,C12,C15,C18 50C14,C15,C18	6/06-		D	V	<b>1851290.8</b>	74	290	95	28	25	46	12.5	9	9
			T	S	<b>1851290.3</b>	84	290	108	22	19	85	10.5	8	17
<b>DAILY IV</b> 65C14,C15,C18	6/06-		D	V	<b>1851300.2</b>	83	300	111	30	27	59		9	10
			T	V	<b>1851306.2</b>	178	306	215	28	25	132		6	13





A = DIAMETRO ACOPLAMIENTO      A = HUB DIAMETER  
 B = DIAMETRO EXTERIOR          B = EXTERIOR DIAMETER  
 C = ENTRECENTROS TALADRO      C = DISTANCE BETWEEN HOLES  
 D = ANCHO DEL DISCO              D = THICKNESS  
 E = ALTURA TOTAL                E = TOTAL HEIGHT  
 X = TALADROS                      X = HOLES  
 D-T = DELANTERO - TRASERO      D-T = FRONT - REAR  
 S-V = MACIZO - VENTILADO       S-V = SOLID - VENTED

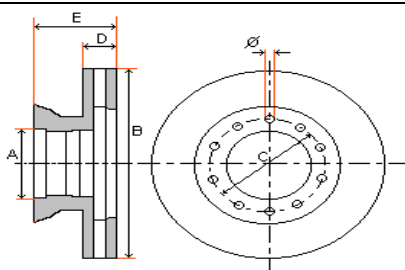
EDICION 06/2011

MODELO	AÑO	Observaciones	D T	S V	REF. ADR98	A	B	C	D	D MIN	E	X		KG
												Ø	Nº	

IVECO													Camión		
CARGOPLUS 7.5T	2/02-		D-T	V	1851304.0	165	304	205	30	28	129	18.2 M10	6 2	13	
CARGOPLUS 18T.	2/02-		D-T	V	1851322.0	215	322	275	30	28	134	20.2 M10	8 2	18	
EUROCARGO 60.12 <i>CON PERNOS</i>	87-91		D	V	1851315.0	160	315	205	26	23	119	18.2 M10	6 2	14	
EUROCARGO 60E10,E12,E14 65E10,E12,E14,E15 70E10,E12,E14 75E10,E12,E15,E17,E18	91-00		D-T	V	1851304.0	165	304	205	30	28	129	18.2 M10	6 2	13	
EUROCARGO 60-65-70-75 CON ABS	06-		T	V	1851304.2	165	304	205	30	28	129	18.2 M10	6 2	13	
EUROCARGO 80E12,E15,E17,E18,E21 95E15,E18,E21 100E15,E17,E18,E21	91-00		D-T	V	1851322.0	215	322	275	30	28	134	20.2 M10	8 2	18	
EUROCARGO 110E15,E18,E23 120E15,E17,E21,E24 130E15,E18,E23,E28 135E18,E23 140E15,E18,E23,E27 CON PERNOS	91-00		D	V	1851370.2	215	370	275	45	41	150	20.2 M10	8 2	32	
EUROCARGO 150E15,E18,E23 210E23,250E25,280E23 320E23,E27,E28	91-00		D	V	1851370.4	215	370	275	45	41	182	22 M10	8 2	34	



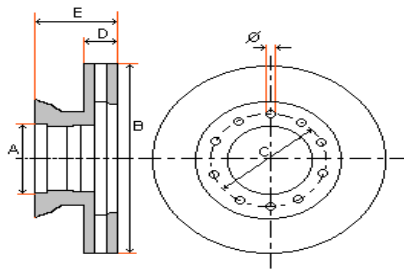
EDICION 06/2011



A = DIAMETRO ACOPLAMIENTO      A = HUB DIAMETER  
 B = DIAMETRO EXTERIOR      B = EXTERIOR DIAMETER  
 C = ENTRECENTROS TALADRO      C = DISTANCE BETWEEN HOLES  
 D = ANCHO DEL DISCO      D = THICKNESS  
 E = ALTURA TOTAL      E = TOTAL HEIGHT  
 X = TALADROS      X = HOLES  
 D-T = DELANTERO - TRASERO      D-T = FRONT - REAR  
 S-V = MACIZO - VENTILADO      S-V = SOLID - VENTED

MODELO	AÑO	Observaciones	D	S	REF. ADR98	A	B	C	D	D MIN	E	X		KG
			T	V								Ø	Nº	

IVECO <span style="float:right">Camión</span>														
EUROCARGO 170E18,E23,E23R 175E24,E27 176E30,E34 179E24,E27,E30 180E21,E23,E24,E28 180EL21,EL24,EL28	91-98		D	V	1851430.0	170	430	195	50	46	102	M16 X 200	12	35
EUROCARGO 210E23,250E25 280E25,	91-00		D	V	1851370.4	215	370	275	45	41	182	22 M10	8 2	34
EUROCARGO 260E23,E28  CON PERNOS	91-00		D	V	1851370.2	215	370	275	45	41	150	20.2 M10	8 2	32
EUROCARGO 320E23,E27,E28	91-00		D	V	1851370.4	215	370	275	45	41	182	22 M10	8 2	34
EUROCARGO 325E27, 390E30,E34	91-98		D	V	1851430.0	170	430	195	50	46	102	M16 X 200	12	35
EUROCARGO TECTOR 60E13,E15 65E13,E15 75E12,E14,E15,E17,E18	00-		D-T	V	1851304.0	165	304	205	30	28	129	18.2 M10	6 2	13
EUROCARGO TECTOR 80E15,E17,E18,E21 95E15,E18,E21 100E15,E17,E18,E21	00-		D-T	V	1851322.0	215	322	275	30	28	134	20.2 M10	8 2	18
EUROCARGO TECTOR 110EL 120EL  CON ABS	00-		T	V	1851330.1	215	330	275	34	31	141	20 M10	8 2	19

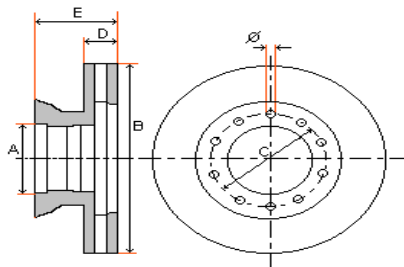


A = DIAMETRO ACOPLAMIENTO      A = HUB DIAMETER  
 B = DIAMETRO EXTERIOR          B = EXTERIOR DIAMETER  
 C = ENTRECENTROS TALADRO      C = DISTANCE BETWEEN HOLES  
 D = ANCHO DEL DISCO              D = THICKNESS  
 E = ALTURA TOTAL                E = TOTAL HEIGHT  
 X = TALADROS                      X = HOLES  
 D-T = DELANTERO - TRASERO      D-T = FRONT - REAR  
 S-V = MACIZO - VENTILADO       S-V = SOLID - VENTED

EDICION 06/2011

MODELO	AÑO	Observaciones	D T	S V	REF. ADR98	A	B	C	D	D MIN	E	X		KG
												Ø	Nº	

IVECO													Camión		
EUROCARGO TECTOR 130E18,E21,E24,E28  CON PERNOS	00-06		D	V	1851370.2	215	370	275	45	41	150	20.2 M10	8 2	32	
			D	V	1851377.2	215	377	275	45	37	151	20 M10	8 2	34	
		PERNOS + ABS	D	V	1851377.4	225	377	275	45	37	151	20 M10	8 2	34	
EUROCARGO TECTOR 130E18,E21,E24,E28	06-		D	V	1851377.6	113	377	144	45	37	107	15.5	14	20	
EUROCARGO TECTOR 140E18,E21,E24,E28  CON PERNOS	00-06		D	V	1851370.2	215	370	275	45	41	150	20.2 M10	8 2	32	
			D	V	1851377.6	113	377	144	45	37	107	15.5	14	20	
		PERNOS +ABS	D	V	1851377.2	215	377	275	45	37	151	20 M10	8 2	34	
		PERNOS +ABS	D	V	1851377.4	225	377	275	45	37	151	20 M10	8 2	34	
		CON ABS	D	V	1851377.5	225	377	275	45	37	151	22 M10	8 2	34	
EUROCARGO TECTOR 140E18,E21,E24,E28  CON ABS	06-		D	V	1851377.6	113	377	144	45	37	107	15.5	14	20	
			D	V	1851377.5	225	377	275	45	37	151	22 M10	8 2	34	
EUROCARGO TECTOR 150E18,E21,E24,E28 CON PERNOS	00-		D	V	1851377.0	215	377	275	45	37	151	22 M10	8 2	34	
		PERNOS + ABS	D	V	1851377.4	225	377	275	45	37	151	20 M10	8 2	34	

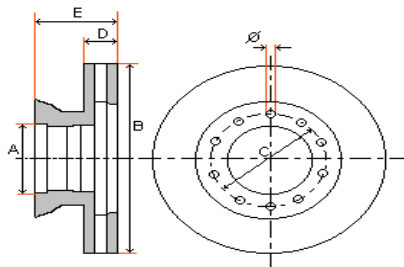


A = DIAMETRO ACOPLAMIENTO      A = HUB DIAMETER  
 B = DIAMETRO EXTERIOR          B = EXTERIOR DIAMETER  
 C = ENTRECENTROS TALADRO      C = DISTANCE BETWEEN HOLES  
 D = ANCHO DEL DISCO              D = THICKNESS  
 E = ALTURA TOTAL                E = TOTAL HEIGHT  
 X = TALADROS                      X = HOLES  
 D-T = DELANTERO - TRASERO      D-T = FRONT - REAR  
 S-V = MACIZO - VENTILADO       S-V = SOLID - VENTED

EDICION 06/2011

MODELO	AÑO	Observaciones	D	S	REF.	A	B	C	D	D	E	X		KG
			T	V	ADR98					MIN		Ø	Nº	

IVECO														Camión	
EUROCARGO TECTOR 160E21,E24,E28  CON ABS	06-		D	V	1851377.6	113	377	144	45	37	107	15.5	14	20	
			D	V	1851377.5	225	377	275	45	37	151	22 M10	8 2	34	
EUROCARGO TECTOR 170E18,E23,E23R 175E24,E27 176E30,E34 179E24,E27,E30	98-		D-T	V	1851435.0	210	436	240	45	37	139	M16 X 200	12	34	
EUROCARGO TECTOR 180E21,E23,E24,E28	00-		D-T	V	1851435.0	210	436	240	45	37	139	M16 X 200	12	34	
EUROFIRE 130E 150E  CON PERNOS	91-		D	V	1851370.2	215	370	275	45	41	150	20.2 M10	8 2	32	
EUROMOVER			D-T	V	1851435.0	210	436	240	45	37	139	M16 X 200	12	34	
EUROSTAR EUROTECH TODOS LOS MODELOS	92-98		D	V	1851430.0	170	430	195	50	46	102	M16 X 200	12	35	
EUROSTAR CURSOR EUROTECH CURSOR TODOS LOS MODELOS	99-		D-T	V	1851435.0	210	436	240	45	37	139	M16 X 200	12	34	

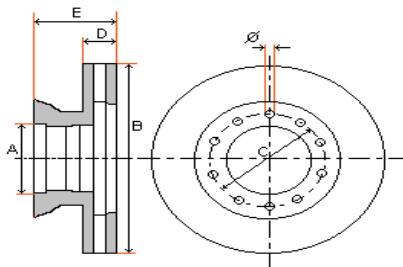


A = DIAMETRO ACOPLAMIENTO      A = HUB DIAMETER  
 B = DIAMETRO EXTERIOR          B = EXTERIOR DIAMETER  
 C = ENTRECENTROS TALADRO      C = DISTANCE BETWEEN HOLES  
 D = ANCHO DEL DISCO              D = THICKNESS  
 E = ALTURA TOTAL                E = TOTAL HEIGHT  
 X = TALADROS                      X = HOLES  
 D-T = DELANTERO - TRASERO      D-T = FRONT - REAR  
 S-V = MACIZO - VENTILADO       S-V = SOLID - VENTED

EDICION 06/2011

MODELO	AÑO	Observaciones	D	S	REF. ADR98	A	B	C	D	D MIN	E	X		KG
			T	V								Ø	Nº	

IVECO													Camión		
<b>EUROTRAKKER CURSOR</b> TODOS LOS MODELOS	99-		D-T	V	1851432.0	210	432	240	45	37	139	M16 X 200	12	34	
<b>STRALIS</b> 440E40,E43,E44,E54	02-		D-T	V	1851435.0	210	436	240	45	37	139	M16 X 200	12	34	
<b>STRALIS</b> TODOS LOS MODELOS	02-07		D-T	V	1851432.0	210	432	240	45	37	139	M16 X 200	12	34	
<b>STRALIS</b> TODOS LOS MODELOS  CON ABS	07-		D-T	V	1851432.0	210	432	240	45	37	139	M16 X 200	12	34	
			D-T	V	1851432.1	210	432	240	45	37	139	M16 X 200	12	34	
<b>SUPERCARGO</b> 170E15,E18,E23 180E23 (4X2) 260 E27 320 E27 (6X4)	93-00		D	V	1851430.0	170	430	195	50	46	102	M16 X 200	12	35	
<b>SUPERCARGO</b>	00-		D-T	V	1851435.0	210	436	240	45	37	139	M16 X 200	12	34	
<b>ZETA</b> 65.12 - 65.14 79.12 - 79.14	87-91		D	V	1851315.0	160	315	205	26	23	119	18.2 M10	6 2	14	
<b>ZETA</b> 65.12 - 65.14 79.12 - 79.14	92-		D	V	1851322.2	220	322	275	30	28	129	20.2 M10	8 2	19	
<b>ZETA</b> 90.14 95.14 109.14	87-92		D	V	1851315.0	160	315	205	26	23	119	18.2 M10	6 2	14	
			D	V	1851322.2	220	322	275	30	28	129	20.2 M10	8 2	19	

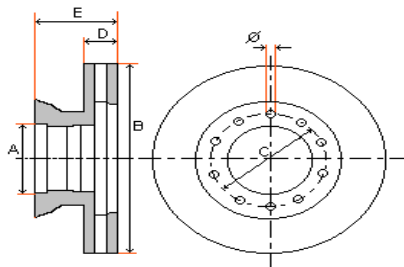


A = DIAMETRO ACOPLAMIENTO      A = HUB DIAMETER  
 B = DIAMETRO EXTERIOR          B = EXTERIOR DIAMETER  
 C = ENTRECENTROS TALADRO      C = DISTANCE BETWEEN HOLES  
 D = ANCHO DEL DISCO              D = THICKNESS  
 E = ALTURA TOTAL                E = TOTAL HEIGHT  
 X = TALADROS                        X = HOLES  
 D-T = DELANTERO - TRASERO      D-T = FRONT - REAR  
 S-V = MACIZO - VENTILADO        S-V = SOLID - VENTED

EDICION 06/2011

MODELO	AÑO	Observaciones	D	S	REF.	A	B	C	D	D	E	X		KG
			T	V	ADR98					MIN		Ø	Nº	

IVECO															Autobús		
AGORA	99-		D	V	1851290.6	80	290	110	26	23	53	12.5	9	5			
			T	S	1851306.0	178	306	215	22	18	136	M10	6	15			
BUS 160R81 315.8 17 315.8 17 TURBO			D	V	1851315.2	240	315	205	35	33	154	18.2 M10	6 2	23			
BUS 370			D	V	1851412.0	160	412	188	42		45	11.5 M10	12 3	15			
BUS 370 - 380 <i>DOBLE DISCO</i>	84-98		D	V	1851417.0	157	417	186	30	27	80	18.5	10	18			
CITYBUS A70.14			D	V	1851322.2	220	322	275	30	28	129	20.2 M10	8 2	19			
CITYCLASS 491 <i>DOBLE DISCO</i>	92-		D	V	1851417.2	159	417	186	28	26	67	18.5	10	16			
CITYCLASS CURSOR 25,29,31,35	99-		D	V	1851436.0	135	436	168	45	39	131	19	12	33			
			T	V	1851436.2	210	436	238	45	39	138	M16 X 200	10	36			
DAILY 35S12,S14  <i>CON ABS</i>	99-06		D	S	1851276.0	73	276	118	22	19	72	15.6 8.7	5 2	6			
			T	S	1851276.2	73	276	118	16	14	69	15.6 8.7	5 2	5			
			T	S	1851276.1	73	276	118	16	14	69	15.6 8.7	5 2	5			
DAILY 35S12,S14 <i>CON ABS</i>	06-		T	S	1851296.0	76	296	125	16	13	69.5	15.6 8.7	6 1	8			
DAILY 35S13 40C13 50C13  <i>CON PERNOS</i>	99-		D	S	1851290.4	123	290	170 95	22	19	111	M18 12.6	6 6	18			
			T	S	1851290.3	84	290	108	22	19	85	10.5	8	17			

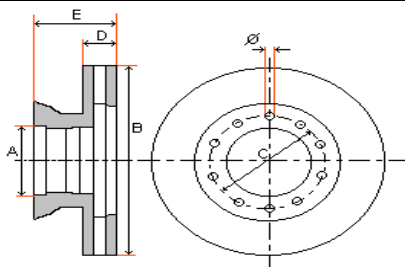


A = DIAMETRO ACOPLAMIENTO      A = HUB DIAMETER  
 B = DIAMETRO EXTERIOR          B = EXTERIOR DIAMETER  
 C = ENTRECENTROS TALADRO      C = DISTANCE BETWEEN HOLES  
 D = ANCHO DEL DISCO              D = THICKNESS  
 E = ALTURA TOTAL                E = TOTAL HEIGHT  
 X = TALADROS                        X = HOLES  
 D-T = DELANTERO - TRASERO      D-T = FRONT - REAR  
 S-V = MACIZO - VENTILADO        S-V = SOLID - VENTED

EDICION 06/2011

MODELO	AÑO	Observaciones	D	S	REF.	A	B	C	D	D	E	X		KG			
			T	V	ADR98												
																Ø	Nº

IVECO													Autobús		
DAILY 45.10, 49.10, 49.12 CON PERNOS			D	S	1851280.1	105	280	170 85 72	16	14	136	M18 12.8 M6	6 6 3	14	
DAILY 50.12, 52.10, 52.12 59.12, 64.12	92-97		D	S	1851267.1	115	267	170 95 72	14.2	12.8	111	M18 12.8 M6	6 6 3	10	
DAILY 60C13	99-		D	V	1851290.6	80	290	110	26	23	53	12.5	9	5	
			T	S	1851306.0	178	306	215	22	18	136	M10	6	15	
DAILY 65C13	99-		T	S	1851306.0	178	306	215	22	18	136	M10	6	15	
DAILY IV 65C15, C18	06-		D	V	1851300.2	83	300	111	30	27	59		9	10	
			T	V	1851306.2	178	306	215	28	25	132		6	13	
EFFEUNO 471.10.20 471.12.20 490 571.20 671.20	84-88		D	V	1851425.0	215	425	255	45	38	166	M16 X 200	10	37	
EL MUNDO EUROCLASS 380 DOBLE DISCO	00-		D	V	1851417.2	159	417	186	28	26	67	18.5	10	16	
EURORIDER DOBLE DISCO	92-		D	V	1851417.2	159	417	186	28	26	67	18.5	10	16	
			D-T	V	1851435.0	210	436	240	45	37	139	M16 X 200	12	34	
INBUS F140FILOBUS I330 - S210 - U210	88-		D-T	V	1851425.2	215	425	255	45	39	160	M16 X 200	10	36	



A = DIAMETRO ACOPLAMIENTO      A = HUB DIAMETER  
 B = DIAMETRO EXTERIOR          B = EXTERIOR DIAMETER  
 C = ENTRECENTROS TALADRO      C = DISTANCE BETWEEN HOLES  
 D = ANCHO DEL DISCO              D = THICKNESS  
 E = ALTURA TOTAL                E = TOTAL HEIGHT  
 X = TALADROS                        X = HOLES  
 D-T = DELANTERO - TRASERO      D-T = FRONT - REAR  
 S-V = MACIZO - VENTILADO        S-V = SOLID - VENTED

EDICION 06/2011

MODELO	AÑO	Observaciones	D	S	REF. ADR98	A	B	C	D	D MIN	E	X		KG
			T	V								Ø	Nº	

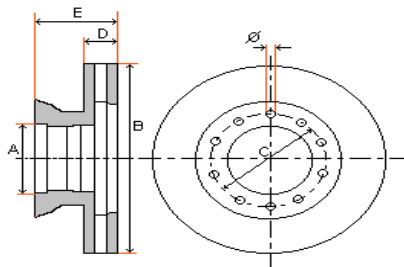
<b>IVECO</b>	<b>Autobús</b>
--------------	----------------

MAXIM 80E 100E	98-		D-T	V	1851322.0	215	322	275	30	28	134	20.2 M10	8 2	18
SCHOLABUS 150E	98-		D-T	V	1851435.0	210	436	240	45	37	139	M16 X 200	12	34
STERGO E	00-		D	V	1851417.2	159	417	186	28	26	67	18.5	10	16
TURBOCITY 480.10.21 - 480.10.31 490.18.29 - .490.22 580.21 - 590E2/22 680.26 - R12	86-		D	V	1851425.4	285	425	335	45	38	171	22.2 M10	10 2	41

<b>KAROSA</b>	<b>Autobús</b>
---------------	----------------

CITY BUS EJE RENAULT	93-		D	V	1851354.0	128	354	151	30	28	82	12.5	10	14
930E 940E	97-			V	1853430.8	211	430	238	45	37	132	M14 x 150	10	30





A = DIAMETRO ACOPLAMIENTO      A = HUB DIAMETER  
 B = DIAMETRO EXTERIOR          B = EXTERIOR DIAMETER  
 C = ENTRECENTROS TALADRO      C = DISTANCE BETWEEN HOLES  
 D = ANCHO DEL DISCO              D = THICKNESS  
 E = ALTURA TOTAL                E = TOTAL HEIGHT  
 X = TALADROS                      X = HOLES  
 D-T = DELANTERO - TRASERO      D-T = FRONT - REAR  
 S-V = MACIZO - VENTILADO       S-V = SOLID - VENTED

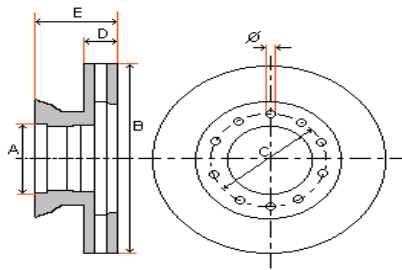
EDICION 06/2011

MODELO	AÑO	Observaciones	D	S	REF.	A	B	C	D	D	E	X		KG
			T	V	ADR98					MIN		Ø	Nº	

KASSBOHRER - SETRA													Autobús		
MINIBUS S208 S209			D	V	1863315.0	253	315	205	35	28	155	18	6	21	
			D	V	1863320.0	190	320	215	50		142	M16	10	20	
SETRA S110, S120, S130, S140, S150, S200			D	V	1863392.0	215	392	255	48	38	120	M16	10	28	
SETRA S130ES S140 S210HD, HDV	82-86		D	V	1863396.0	194	396	215	48	38	119	M16	10	28	
SETRA S210HD, HDV	89-		D	V	1863406.0	194	406	215	48	38	175	M16	10	30	
SETRA S211H, HD, U, UL S212H, HD, U, UL S213H, HD, U, UL	77-88		D	V	1863396.0	194	396	215	48	38	119	M16	10	28	
SETRA S211H, HD, U, UL S212H, HD, U, UL S213H, HD, U, UL	89-		D	V	1863406.0	194	406	215	48	38	175	M16	10	30	
SETRA S215HDH S216HDH, HDS, HDSI S228DT			D	V	1863396.0	194	396	215	48	38	119	M16	10	28	
SETRA S215HDH S216HDH, HDS, HDSI S228DT			D	V	1863406.0	194	406	215	48	38	175	M16	10	30	
SETRA S300NC CITY S309, S313, S315 S317, S319, S321 HD Y HDH	91-				1870432.0	194	432	220	45	37	135	M16	10	33	



EDICION 06/2011



- A = DIAMETRO ACOPLAMIENTO      A = HUB DIAMETER
- B = DIAMETRO EXTERIOR          B = EXTERIOR DIAMETER
- C = ENTRECENTROS TALADRO      C = DISTANCE BETWEEN HOLES
- D = ANCHO DEL DISCO              D = THICKNESS
- E = ALTURA TOTAL                E = TOTAL HEIGHT
- X = TALADROS                      X = HOLES
- D-T = DELANTERO - TRASERO      D-T = FRONT - REAR
- S-V = MACIZO - VENTILADO        S-V = SOLID - VENTED

MODELO	AÑO	Observaciones	D	S	REF.	A	B	C	D	D	E	X		KG			
			T	V	ADR98											Ø	Nº

KASSBOHRER - SETRA													Autobús		
--------------------	--	--	--	--	--	--	--	--	--	--	--	--	---------	--	--

SETRA S328DT	95-		D	V	1863430.0	194	430	220	45	37	136	M16 X 150	10	33
			D	V	1870430.0	203	430	235	45	37	131	M16 X 150	10	33
SETRA S415 S417	01-		D-T	V	1870430.0	203	430	235	45	37	131	M16 X 150	10	33
			D-T	V	1853430.8	211	430	238	45	37	132	M14 X 150	10	30

KESSLER													Maquinaria O.P.		
---------	--	--	--	--	--	--	--	--	--	--	--	--	-----------------	--	--

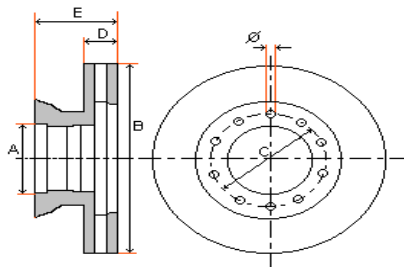
				S	1880492.0	220	492	245	26		48	19	16	25

KOMATSU													Maquinaria O.P.		
---------	--	--	--	--	--	--	--	--	--	--	--	--	-----------------	--	--

					1880460.0	168	460	238	13		13	19	12	12

KRUPP													Maquinaria O.P.		
-------	--	--	--	--	--	--	--	--	--	--	--	--	-----------------	--	--

				S	1880492.0	220	492	245	26		48	19	16	25



A = DIAMETRO ACOPLAMIENTO      A = HUB DIAMETER  
 B = DIAMETRO EXTERIOR          B = EXTERIOR DIAMETER  
 C = ENTRECENTROS TALADRO      C = DISTANCE BETWEEN HOLES  
 D = ANCHO DEL DISCO              D = THICKNESS  
 E = ALTURA TOTAL                E = TOTAL HEIGHT  
 X = TALADROS                      X = HOLES  
 D-T = DELANTERO - TRASERO      D-T = FRONT - REAR  
 S-V = MACIZO - VENTILADO        S-V = SOLID - VENTED

EDICION 06/2011

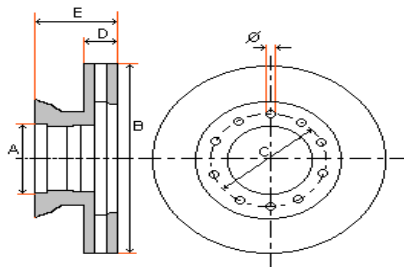
MODELO	AÑO	Observaciones	D	S	REF.	A	B	C	D	D	E	X		KG
			T	V	ADR98					MIN		Ø	Nº	

<b>LDV</b>													<b>Camión</b>		
------------	--	--	--	--	--	--	--	--	--	--	--	--	---------------	--	--

<b>55 SERIES</b> FA55.150 FA55.160 FA55.180 FA55.210 FA55.230	95-02		D	V	<b>1850375.0</b>	155	375	185	44	40	128	M14 x 150	10	22
<b>LF45 SERIES</b> Excepto 12 Ton. PAN17 LLANTA 17,5"	01-		D	V	<b>1850330.1</b>	117	330	138	34	31	123	M12 x 175	12	20
			T	V	<b>1850330.3</b>	150	330	175	34	31	119	M12 x 175	12	20
<b>LF55 SERIES</b> PAN19 LLANTA 17.5" PAN19 PLUS 19,5"			D	V	<b>1850375.2</b>	117	375	144	45	40	99	15 M14	10 2	25
			T	V	<b>1850375.4</b>	179	375	210	45	40	146	M14 x 150	10	26

<b>LECIÑENA</b>													<b>Remolque / Trailer</b>		
-----------------	--	--	--	--	--	--	--	--	--	--	--	--	---------------------------	--	--

<b>FD22 SB4345</b> BOMBEO ET-0 CON ABS				V	<b>1814430.1</b>	203	430	238	45	37	132	M14 x 150	10	30
<b>FD22 SB3745</b> BOMBEO ET-120 19,5"				V	<b>1814370.1</b>	131	377	168	45	37	140	19	12	30
<b>FD22 SB4345</b> BOMBEO ET-120 22,5"					<b>1814430.5</b>	131	430	168	45	37	140	19 M12	12 3	35
<b>EJE ZF</b>					<b>1870432.0</b>	194	432	220	45	37	135	M16 x 150	10	33



A = DIAMETRO ACOPLAMIENTO      A = HUB DIAMETER  
 B = DIAMETRO EXTERIOR          B = EXTERIOR DIAMETER  
 C = ENTRECENTROS TALADRO      C = DISTANCE BETWEEN HOLES  
 D = ANCHO DEL DISCO              D = THICKNESS  
 E = ALTURA TOTAL                E = TOTAL HEIGHT  
 X = TALADROS                      X = HOLES  
 D-T = DELANTERO - TRASERO      D-T = FRONT - REAR  
 S-V = MACIZO - VENTILADO        S-V = SOLID - VENTED

EDICION 06/2011

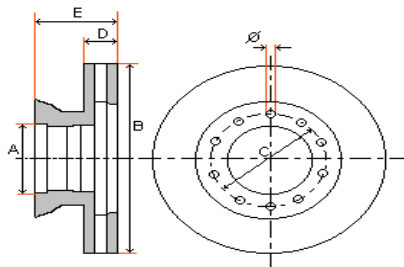
MODELO	AÑO	Observaciones	D	S	REF.	A	B	C	D	D	E	X		KG
			T	V	ADR98					MIN		Ø	Nº	

LEYLAND														Autobús	
ROADRUNNER T45 6.10, 6.12, 8.10, 8.12	86-96		D	V	1850314.0	119	314	138	26	24	122	M12 x 175	10	13	
ROADRUNNER T45 10.12, 10.15	86-96		D	V	1850311.0	133	311	155	30	27	137	M12 x 175	12	14	
SWIFT BUS	87-		D	V	1850311.0	133	311	155	30	27	137	M12 x 175	12	14	

LIAZ														Autobús	
400 SERIES	98-			V	1853430.8	211	430	238	45	37	132	M14 x 150	10	30	

LIEBHERR														Maquinaria O.P.	
				S	1880492.0	220	492	245	26		48	19	16	25	

LUNA														Maquinaria O.P.	
				S	1880492.0	220	492	245	26		48	19	16	25	

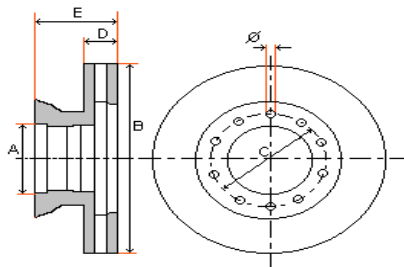


A = DIAMETRO ACOPLAMIENTO      A = HUB DIAMETER  
 B = DIAMETRO EXTERIOR          B = EXTERIOR DIAMETER  
 C = ENTRECENTROS TALADRO      C = DISTANCE BETWEEN HOLES  
 D = ANCHO DEL DISCO              D = THICKNESS  
 E = ALTURA TOTAL                E = TOTAL HEIGHT  
 X = TALADROS                        X = HOLES  
 D-T = DELANTERO - TRASERO      D-T = FRONT - REAR  
 S-V = MACIZO - VENTILADO      S-V = SOLID - VENTED

EDICION 06/2011

MODELO	AÑO	Observaciones	D	S	REF.	A	B	C	D	D	E	X		KG
			T	V	ADR98					MIN		Ø	Nº	

MAN														Camión	
19.372, 19502F, FL, FS 25.502DF, DFS, 26414 26502FNL, 27502DF, DFS 32632, 33502, 35403	89-		D	V	1852438.0	200	438	235	45	40	135	M16 X 150	10	32	
F90 SERIES  CON ABS	89-96		D-T	V	1852432.0	208	433	235	45	39	135	M16 X 150	10	34	
			D	V	1852432.4	208	432	235	45	39	135	M16 X 150	10	34	
F2000 SERIES	94-		D	V	1852432.2	131	432	168	45	40	130	19 M12 X 150	12 3	33	
			D	V	1852438.0	200	438	235	45	40	135	M16 X 150	10	32	
L2000 SERIES 6.103,7.163,8.103,8.150 8.153,8.163,8.220,8.223 9.153,9.163,9.223,9.224 10.153,10.154,10.163 10.220,10.223,10.224	93-95		D	V	1852325.0	135	325	158	30	26	103	M14 X 150	10	13	
			D	V	1852330.0	157	330	180	34	28	124	M12 X 150	12	17	
L2000 SERIES 6.103,7.163,8.103,8.150 8.153,8.163,8.220,8.223 9.153,9.163,9.223,9.224 10.153,10.154,10.163 10.220,10.223,10.224	96-		D	V	1852330.2	135	330	158	34	30	104	M14 X 150	10	13	
			D-T	V	1852330.0	157	330	180	34	28	124	M12 X 150	12	17	
			T	V	1852330.4	145	330	177	34	28	129	M12 X 150	8	20	
LE SERIES 8-12TON. L2000 EVOLUTION LE110C, LE140C LE150C, LE160C LE180C, LE220C	00-		D	V	1852330.2	135	330	158	34	30	104	M14 X 150	10	13	
			D-T	V	1852330.0	157	330	180	34	28	124	M12 X 150	12	17	
			T	V	1852330.4	145	330	177	34	28	129	M12 X 150	8	20	

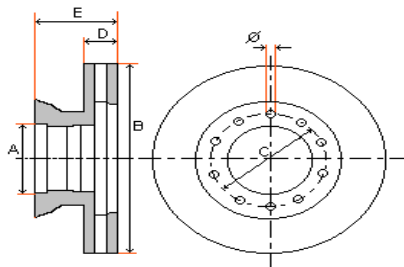


A = DIAMETRO ACOPLAMIENTO      A = HUB DIAMETER  
 B = DIAMETRO EXTERIOR          B = EXTERIOR DIAMETER  
 C = ENTRECENROS TALADRO      C = DISTANCE BETWEEN HOLES  
 D = ANCHO DEL DISCO            D = THICKNESS  
 E = ALTURA TOTAL                E = TOTAL HEIGHT  
 X = TALADROS                      X = HOLES  
 D-T = DELANTERO - TRASERO    D-T = FRONT - REAR  
 S-V = MACIZO - VENTILADO      S-V = SOLID - VENTED

EDICION 06/2011

MODELO	AÑO	Observaciones	D	S	REF.	A	B	C	D	D	E	X		KG
			T	V	ADR98					MIN		Ø	Nº	

MAN														Camión	
LE SERIES 14-18TON. L2000 EVOLUTION LE220B 14.225,15.225 LE250B 14.255,15.225 LE280B 14.285,15.285	00-		D	V	1852377.0	162	377	195	45	38	128	M14 X 150	10	23	
			D	V	1852432.2	131	432	168	45	40	130	19 M12 X 150	12 3	33	
			D	V	1852438.0	200	438	235	45	40	135	M16 x 150	10	32	
LE SERIES 18-26TON.	05-		D	V	1852432.2	131	432	168	45	40	130	19 M12 X 150	12 3	33	
M90 SERIES 17.192 - 24.272	88-98		D-T	V	1852432.0	208	433	235	45	39	135	M16 x 150	10	34	
			D	V	1852432.4	208	432	235	45	39	135	M16 X 150	10	34	
M2000 L SERIES 12.163 12.164 12.224	96-00		D	V	1852330.2	135	330	158	34	30	104	M14 X 150	10	13	
			T	V	1852330.0	157	330	180	34	28	124	M12 X 150	12	17	
M2000 L SERIES 14.163,14.224,14.264 15.163,15.264,15.284	95-00		D-T	V	1852377.0	162	377	195	45	38	128	M14 X 150	10	23	
M2000 L SERIES 18.224 18.264 18.294	95-00		D	V	1852432.2	131	432	168	45	40	130	19 M12 X 150	12 3	33	
			D	V	1852438.0	200	438	235	45	40	135	M16 x 150	10	32	
M2000 M SERIES 14.163,14.224,14.264 15.163,15.264,15.284	95-00		D-T	V	1852377.0	162	377	195	45	38	128	M14 X 150	10	23	



A = DIAMETRO ACOPLAMIENTO      A = HUB DIAMETER  
 B = DIAMETRO EXTERIOR          B = EXTERIOR DIAMETER  
 C = ENTRECENROS TALADRO      C = DISTANCE BETWEEN HOLES  
 D = ANCHO DEL DISCO            D = THICKNESS  
 E = ALTURA TOTAL                E = TOTAL HEIGHT  
 X = TALADROS                      X = HOLES  
 D-T = DELANTERO - TRASERO    D-T = FRONT - REAR  
 S-V = MACIZO - VENTILADO      S-V = SOLID - VENTED

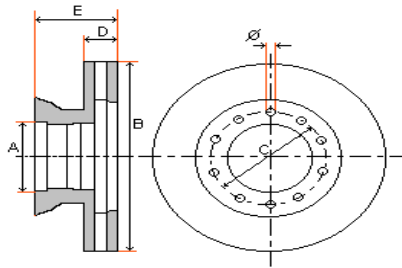
EDICION 06/2011

MODELO	AÑO	Observaciones	D	S	REF.	A	B	C	D	D	E	X		KG
			T	V	ADR98					MIN		Ø	Nº	

MAN													Camión		
<b>M2000 M SERIES</b> 18.224 18.264 18.294 25.224 25.264	95-00		D	V	<b>1852432.2</b>	131	432	168	45	40	130	19 M12 X 150	12 3	33	
			D	V	<b>1852438.0</b>	200	438	235	45	40	135	M16 x 150	10	32	
<b>ME SERIES 12-14TON.</b> ME220B, ME250B ME280B, ME280C	00-05		D-T	V	<b>1852377.0</b>	162	377	195	45	38	128	M14 X 150	10	23	
<b>ME SERIES 14-18TON.</b> <b>M2000 EVOLUTION</b> ME220B, ME250B ME280B, ME280C	00-		D-T	V	<b>1852377.0</b>	162	377	195	45	38	128	M14 X 150	10	23	
			D	V	<b>1852432.2</b>	131	432	168	45	40	130	19 M12 X 150	12 3	33	
			D	V	<b>1852438.0</b>	200	438	235	45	40	135	M16 x 150	10	32	
<b>ME SERIES 18-26TON.</b> <b>M2000 EVOLUTION</b> ME220B, ME250B ME280B, ME280C	00-05		D	V	<b>1852432.2</b>	131	432	168	45	40	130	19 M12 X 150	12 3	33	
			D	V	<b>1852438.0</b>	200	438	235	45	40	135	M16 x 150	10	32	
<b>TGA</b> 18.350, 18.390, 18.430 26.390, 26.430, 26.480 32.350, 32.480	00-		D-T	V	<b>1852377.5</b>	106	377	144	45	38	110	17	12	15	
			D	V	<b>1852432.2</b>	131	432	168	45	40	130	19 M12 X 150	12 3	33	
			D-T	V	<b>1852432.0</b>	208	433	235	45	39	135	M16 x 150	10	34	
			D	V	<b>1852432.4</b>	208	432	235	45	39	135	M16 X 150	10	34	



EDICION 06/2011



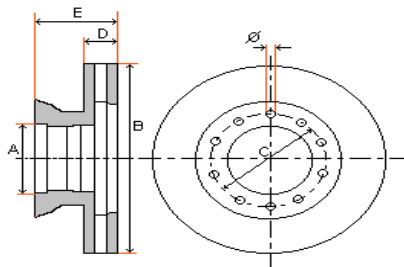
A = DIAMETRO ACOPLAMIENTO      A = HUB DIAMETER  
 B = DIAMETRO EXTERIOR          B = EXTERIOR DIAMETER  
 C = ENTRECENTROS TALADRO      C = DISTANCE BETWEEN HOLES  
 D = ANCHO DEL DISCO              D = THICKNESS  
 E = ALTURA TOTAL                E = TOTAL HEIGHT  
 X = TALADROS                      X = HOLES  
 D-T = DELANTERO - TRASERO      D-T = FRONT - REAR  
 S-V = MACIZO - VENTILADO        S-V = SOLID - VENTED

MODELO	AÑO	Observaciones	D	S	REF. ADR98	A	B	C	D	D MIN	E	X		KG
			T	V								Ø	Nº	

<b>MAN</b>	<b>Camión</b>
------------	---------------

TGL	05-		D	V	1852335.0	90	335	122	34	26	93	15	10	14
			T	V	1852335.2	154	335	176	34	26	118	M14 X 150	10	15
TGM 15 TON. 15.240, 15.280 LLANTA 19,5"	05-		D-T	V	1852377.0	162	377	195	45	38	128	M14 X 150	10	23
TGM 13-18-26 TON. 13.240, 13.280 18.240, 18.280, 18.330 26.280, 26.330 LLANTA 22,5"	05-		D	V	1852432.2	131	432	168	45	40	130	19 M12 X 150	12 3	33
			D-T	V	1852432.0	208	433	235	45	39	135	M16 x 150	10	34
TGM	05-		D	V	1852335.0	90	335	122	34	26	93	15	10	14
			T	V	1852335.2	154	335	176	34	26	118	M14 X 150	10	15
			D-T	V	1852377.5	106	377	144	45	38	110	17	12	15





A = DIAMETRO ACOPLAMIENTO      A = HUB DIAMETER  
 B = DIAMETRO EXTERIOR          B = EXTERIOR DIAMETER  
 C = ENTRECENROS TALADRO      C = DISTANCE BETWEEN HOLES  
 D = ANCHO DEL DISCO            D = THICKNESS  
 E = ALTURA TOTAL                E = TOTAL HEIGHT  
 X = TALADROS                      X = HOLES  
 D-T = DELANTERO - TRASERO    D-T = FRONT - REAR  
 S-V = MACIZO - VENTILADO      S-V = SOLID - VENTED

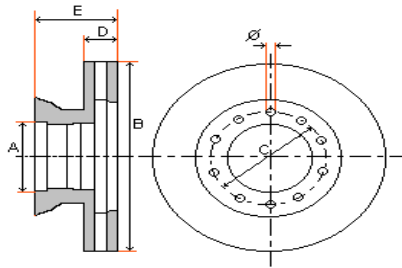
EDICION 06/2011

MODELO	AÑO	Observaciones	D	S	REF.	A	B	C	D	D	E	X		KG
			T	V	ADR98					MIN		Ø	Nº	

MAN															Autobús		
CITY BUS 11.220 HOCL LLANTA 19,5"	98-		D	V	1853377.2	105	377	138	45	37	134	14.5	14	23			
			T	V	1853370.8	176	377	201	45	37	139	M14 x 150	8	25			
CITY BUS 12.220 HOCL 14.220, 14.223 14.280 HOCL	89-96		D	V	1852377.0	162	377	195	45	38	128	M14 X 150	10	23			
			D-T	V	1852432.0	208	433	235	45	39	135	M16 x 150	10	34			
CITY BUS 18.220, 18.230, 18.250 18.310, 18.313, 18.370 18.400, 18.420 HOCL	93-01		D	V	1852432.2	131	432	168	45	40	130	19 M12 X 150	12 3	33			
			D-T	V	1852432.0	208	433	235	45	39	135	M16 x 150	10	34			
CITY BUS NG-NL SERIES UN-UL SERIES LLANTA 22,5"	89-96		D-T	V	1852432.0	208	433	235	45	39	135	M16 x 150	10	34			
			D	V	1852438.0	200	438	235	45	40	135	M16 x 150	10	32			
EL SERIES EL202 - 222 - 262	93-99		D	V	1852438.0	200	438	235	45	40	135	M16 x 150	10	32			
LION'S CITY  LION'S COACH NG SERIES  LION'S COMFORT NG SERIES RN SERIES	96-		D	V	1852432.2	131	432	168	45	40	130	19 M12 X 150	12 3	33			
			D-T	V	1852432.0	208	433	235	45	39	135	M16 x 150	10	34			
LION'S STAR FRH352 FRH402 FRH422 RH353 RH403	93-00		D	V	1853304.0	118	304	140	30	26	91	M12 x 150	6	10			
			D	V	1852438.0	200	438	235	45	40	135	M16 x 150	10	32			



EDICION 06/2011

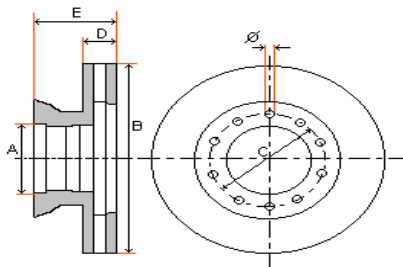


A = DIAMETRO ACOPLAMIENTO      A = HUB DIAMETER  
 B = DIAMETRO EXTERIOR          B = EXTERIOR DIAMETER  
 C = ENTRECENTROS TALADRO      C = DISTANCE BETWEEN HOLES  
 D = ANCHO DEL DISCO              D = THICKNESS  
 E = ALTURA TOTAL                E = TOTAL HEIGHT  
 X = TALADROS                      X = HOLES  
 D-T = DELANTERO - TRASERO      D-T = FRONT - REAR  
 S-V = MACIZO - VENTILADO      S-V = SOLID - VENTED

MODELO	AÑO	Observaciones	D	S	REF.	A	B	C	D	D	E	X		KG
			T	V	ADR98					MIN		Ø	Nº	

<b>MAN</b>	<b>Autobús</b>
------------	----------------

LION'S STAR	00-		D	V	1852432.2	131	432	168	45	40	130	19 M12 X 150	12 3	33
			D-T	V	1852432.0	208	433	235	45	39	135	M16 x 150	10	34
NG SERIES NG262 - 272 - 312	95-98		D	V	1852438.0	200	438	235	45	40	135	M16 x 150	10	32
NG SERIES NG262 - 263 NG312 - 313	98-		D	V	1852432.2	131	432	168	45	40	130	19 M12 X 150	12 3	33
			T	V	1852432.0	208	433	235	45	39	135	M16 x 150	10	34
			T	V	1852432.4	208	432	235	45	39	135	M16 X 150	10	34
NL SERIES NL202-222-223	89-		D-T	V	1852432.0	208	433	235	45	39	135	M16 x 150	10	34
NL SERIES NL312	95-98		D	V	1852438.0	200	438	235	45	40	135	M16 x 150	10	32
NL SERIES NL313	98-		D	V	1852432.2	131	432	168	45	40	130	19 M12 X 150	12 3	33
			T	V	1852432.0	208	433	235	45	39	135	M16 x 150	10	34
			T	V	1852432.4	208	432	235	45	39	135	M16 X 150	10	34
NM SERIES NM222 - 223			D	V	1852438.0	200	438	235	45	40	135	M16 x 150	10	32



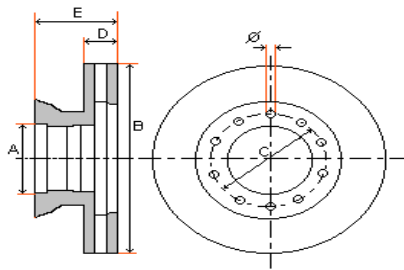
A = DIAMETRO ACOPLAMIENTO      A = HUB DIAMETER  
 B = DIAMETRO EXTERIOR          B = EXTERIOR DIAMETER  
 C = ENTRECENTROS TALADRO      C = DISTANCE BETWEEN HOLES  
 D = ANCHO DEL DISCO              D = THICKNESS  
 E = ALTURA TOTAL                E = TOTAL HEIGHT  
 X = TALADROS                        X = HOLES  
 D-T = DELANTERO - TRASERO      D-T = FRONT - REAR  
 S-V = MACIZO - VENTILADO       S-V = SOLID - VENTED

EDICION 06/2011

MODELO	AÑO	Observaciones	D	S	REF. ADR98	A	B	C	D	D MIN	E	X		KG
			T	V								Ø	Nº	

<b>MAN</b>	<b>Autobús</b>
------------	----------------

<b>NU. SERIES</b> NU263 - 313 - 353	96-		D	V	1852432.2	131	432	168	45	40	130	19	12	33
												M12	3	
			T	V	1852432.0	208	433	235	45	39	135	M16	10	34
												X		
												150		
<b>SG SERIES</b> SG150 - SG190 SG230 - SG750	93-95		D	V	1852325.0	135	325	158	30	26	103	M14	10	13
												X		
												150		
<b>SL SERIES</b> SL150 - SL190 SL230 - SL750	93-96		D	V	1852325.0	135	325	158	30	26	103	M14	10	13
												X		
												150		
<b>SU SERIES</b> SU210	93-96		D	V	1852325.0	135	325	158	30	26	103	M14	10	13
												X		
												150		
<b>SU SERIES</b> SU210	96-		D	V	1852330.2	135	330	158	34	30	104	M14	10	13
												X		
												150		
<b>SU SERIES</b> SU230	93-96		D	V	1852325.0	135	325	158	30	26	103	M14	10	13
												X		
												150		
<b>SU SERIES</b> SU230	96-		D	V	1852330.2	135	330	158	34	30	104	M14	10	13
			D-T	V	1852330.0	157	330	180	34	28	124	M12	12	17
												X		
												150		
<b>UL SERIES</b> UL313 UL354	02-		D	V	1852432.2	131	432	168	45	40	130	19	12	33
						M12	3							
			T	V	1852432.0	208	433	235	45	39	135	M16	10	34
												X		
												150		

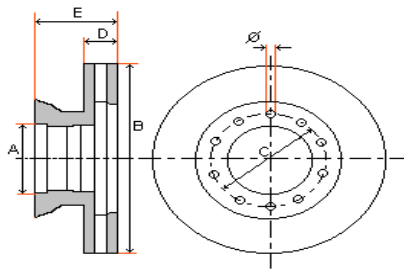


A = DIAMETRO ACOPLAMIENTO      A = HUB DIAMETER  
 B = DIAMETRO EXTERIOR          B = EXTERIOR DIAMETER  
 C = ENTRECENROS TALADRO        C = DISTANCE BETWEEN HOLES  
 D = ANCHO DEL DISCO              D = THICKNESS  
 E = ALTURA TOTAL                E = TOTAL HEIGHT  
 X = TALADROS                      X = HOLES  
 D-T = DELANTERO - TRASERO      D-T = FRONT - REAR  
 S-V = MACIZO - VENTILADO        S-V = SOLID - VENTED

EDICION 06/2011

MODELO	AÑO	Observaciones	D	S	REF.	A	B	C	D	D	E	X		KG
			T	V	ADR98					MIN		Ø	Nº	

MERCEDES															Vehículo ligero		
MB SERIES 100D	87-95		D	S	1853238.0	102	238	140	14	14	79	17	5	6			
MB SERIES 100D, 130, 170	89-95		D	V	1853263.0	102	263	140	24	22	82	M14 X 150	5	7			
SPRINTER 208CDI, 208D, 211CDI 212D, 212TD, 213CDI 214,216CDI, 308CDI 308D, 310CDI, 312D 312TD, 314, 316CDI 408CDI, 408D, 410CDI 411CDI, 412D, 412TD 413CDI, 414, 416CDI	96-06		D	V	1853276.0	85	276	130	22	19	76	15 AV	5 2	6			
			T	S	1853258.0	85	258	130	12	10	96	15 AV	5 2	6			
			T	S	1853272.0	85	272	130	16	14	96	15 AV	5 2	7			
			T	V	1853285.0	120	285	145	22	19	93	15	6	7			
SPRINTER 616CDI	01-		D	V	1853290.0	70	290	96	26	23	70	14.5	8	8			
			T	V	1853304.1	118	304	192	30	26	115	M12 X 150	6	11			
SPRINTER II 3-3.5 TON	06-		D	V	1853300.0	85	300	130	28	25	69	15.3 AV	6 1	7			
			T	S	1853298.0	85	298	130	16	14	71	15.3 AV	6 1	7			
SPRINTER II 5TON.	06-		D	V	1853300.0	85	300	130	28	25	69	15.3 AV	6 1	7			
			T	S	1853298.0	85	298	130	16	14	71	15.3 AV	6 1	7			
			T	V	1853303.0	120	303	145	28	25	93	15.1	6	9			
T2 SERIES 508D, 510, 511D 608D, 609D	86-95		D	S	1853280.2	88	280	112	22	19	79	12.5 18	5 5	9			
			D	V	1853304.0	118	304	140	30	26	91	M12 X 150	6	10			

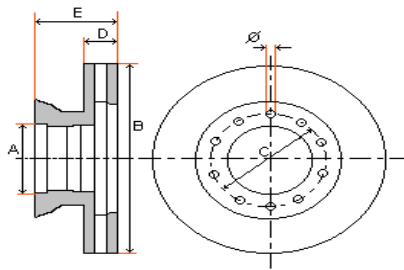


A = DIAMETRO ACOPLAMIENTO      A = HUB DIAMETER  
 B = DIAMETRO EXTERIOR          B = EXTERIOR DIAMETER  
 C = ENTRECENTROS TALADRO      C = DISTANCE BETWEEN HOLES  
 D = ANCHO DEL DISCO              D = THICKNESS  
 E = ALTURA TOTAL                E = TOTAL HEIGHT  
 X = TALADROS                      X = HOLES  
 D-T = DELANTERO - TRASERO      D-T = FRONT - REAR  
 S-V = MACIZO - VENTILADO       S-V = SOLID - VENTED

EDICION 06/2011

MODELO	AÑO	Observaciones	D	S	REF.	A	B	C	D	D	E	X		KG
			T	V	ADR98					MIN		Ø	Nº	

MERCEDES															Vehiculo ligero		
T2 SERIES 709D, 711D	86-98		D	V	1853304.0	118	304	140	30	26	91	M12 X 150	6	10			
			D	V	1853324.0	118	324	140	30	26	91	M12 X 150	6	11			
T2 SERIES 809D, 811D, 814D	86-98		D	V	1853324.0	118	324	140	30	26	91	M12 X 150	6	11			
			D	V	1853324.4	184	324	205	30	27	111	M12 X 150	6	11			
VARIO 4.3TDI 810D, 814D, 814TD	96-		D	V	1853324.0	118	324	140	30	26	91	M12 X 150	6	11			
			D	S	1853324.6	118	324	140	30	26	91	M12 X 150	6	15			
			T	V	1853324.8	120	324	192	30	27	120	M12 X 150	6	10			
			T	V	1853324.2	157	324	192	30	26	120	M12 X 150	6	10			
VARIO O409 5412D 612D, 614D 812D	96-		D	V	1853304.0	118	304	140	30	26	91	M12 X 150	6	10			
			T	V	1853304.4	120	304	192	30	27	120	M12 X 150	6	14			
			T	V	1853304.6	157	304	192	30	26	120	M12 X 150	6	11			
VITO 106D 110D 113	96-03		D	V	1853276.2	67	276	112	22	19	60	15 AV	5 1	6			
			T	S	1853280.4	67	280	112	10	8	65	15 AV	5 1	4			
VITO II 109CDI 111CDI 115CDI 119 112	03-		D	V	1853300.2	67	300	112 120	28	25	59	15.1 AV	5 1	8			
			T	S	1853296.0	67	296	112 120	10	8	52	15.5 AV	5 1	5			

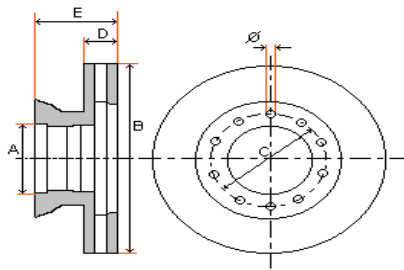


A = DIAMETRO ACOPLAMIENTO      A = HUB DIAMETER  
 B = DIAMETRO EXTERIOR          B = EXTERIOR DIAMETER  
 C = ENTRECENROS TALADRO      C = DISTANCE BETWEEN HOLES  
 D = ANCHO DEL DISCO            D = THICKNESS  
 E = ALTURA TOTAL                E = TOTAL HEIGHT  
 X = TALADROS                      X = HOLES  
 D-T = DELANTERO - TRASERO    D-T = FRONT - REAR  
 S-V = MACIZO - VENTILADO      S-V = SOLID - VENTED

EDICION 06/2011

MODELO	AÑO	Observaciones	D	S	REF. ADR98	A	B	C	D	D MIN	E	X		KG
			T	V								Ø	Nº	

MERCEDES													Camión		
ACTROS	07-		D-T	V	1853430.5	131	430	168	45	37	143	21 M12	10 2	34	
ACTROS 1831 - 4148	96-		D-T	V	1853430.8	211	430	238	45	37	132	M14 x 150	10	30	
ATEGO 712 - 823 917 - 1023 LLANTA 17,5"	98-		D	V	1853335.2	92	335	120	34	28	103	14.5	10	14	
			T	V	1853330.0 1852330.4	145	330	177	34	28	130	M12 X 150	8	15	
			T	V	1853335.4	145	335	177	34	28	111	M12 X 150	8	14	
ATEGO 917 - 1023 1215 - 1528 LLANTA 19,5"	98-		D	V	1853377.2	105	377	138	45	37	134	14.5	14	23	
			T	V	1853370.8	176	377	201	45	37	139	M14 x 150	8	25	
ATEGO II 1823 - 1828 2528 - 2628 LLANTA 22,5"	96-		D-T	V	1853430.8	211	430	238	45	37	132	M14 x 150	10	30	
ATEGO LLANTA 19,5"	06-		T	V	1853377.4	211	377	238	45	37	132	M14 X 150	10	25	
AXOR 1831 - 2557	02-		D-T	V	1853430.8	211	430	238	45	37	132	M14 x 150	10	30	
ECONIC	98-														
MB TRAK79			D	S	1853421.0	145	421	180	22	20.5	62	M18 X 150	8	17	
POWERLINER	92-97		D-T	V	1853430.8	211	430	238	45	37	132	M14 x 150	10	30	



A = DIAMETRO ACOPLAMIENTO      A = HUB DIAMETER  
 B = DIAMETRO EXTERIOR          B = EXTERIOR DIAMETER  
 C = ENTRECENROS TALADRO      C = DISTANCE BETWEEN HOLES  
 D = ANCHO DEL DISCO            D = THICKNESS  
 E = ALTURA TOTAL                E = TOTAL HEIGHT  
 X = TALADROS                      X = HOLES  
 D-T = DELANTERO - TRASERO    D-T = FRONT - REAR  
 S-V = MACIZO - VENTILADO      S-V = SOLID - VENTED

EDICION 06/2011

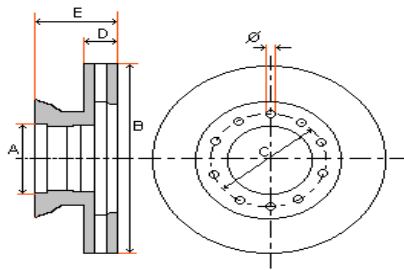
MODELO	AÑO	Observaciones	D T	S V	REF. ADR98	A	B	C	D	D MIN	E	X		KG
												Ø	Nº	

MERCEDES													Camión		
----------	--	--	--	--	--	--	--	--	--	--	--	--	--------	--	--

UNIMOG 95			D-T	S	1853385.0	145	385	180	22	20.5	71	M18 X 150	8	16
UNIMOG U600 - U800 U1000 - U1200	73-91		D-T	S	1853374.0	80.3	374	108	22	20.5	22	16.5	10	15
UNIMOG U1500 - U1700			D-T	S	1853380.2	148	380	180	30	26	64	M18 X 150	8	19
			D-T	S	1853380.4	145	380	180	30	26	68	M18 X 150	8	16

MERCEDES - DISCOS													Remolque / Trailer		
-------------------	--	--	--	--	--	--	--	--	--	--	--	--	--------------------	--	--

SB7000 DB19 - DB20 - DB22 PAN22 PAN22-1	98-			V	1853430.8	211	430	238	45	37	132	M14 x 150	10	30
DLS - DCA AXLES TIPO SAF				V	1828430.5	131	430	168	45	37	130	19 M12	12 3	33
PAN19 PAN19-1 PAN19-2	00-			V	1853370.8	176	377	201	45	37	139	M14 x 150	8	25
SB5000	99-			V	1853335.4	145	35	177	34	28	111	M12 X 150	8	14
SB6000	99-			V	1853370.8	176	377	201	45	37	139	M14 x 150	8	25
TE / TZ TE4 / TZ4-8 LLANTA 19,5"	06-			V	1853377.4	211	377	238	45	37	132	M14 X 150	10	25



A = DIAMETRO ACOPLAMIENTO      A = HUB DIAMETER  
 B = DIAMETRO EXTERIOR          B = EXTERIOR DIAMETER  
 C = ENTRECENTROS TALADRO      C = DISTANCE BETWEEN HOLES  
 D = ANCHO DEL DISCO              D = THICKNESS  
 E = ALTURA TOTAL                E = TOTAL HEIGHT  
 X = TALADROS                      X = HOLES  
 D-T = DELANTERO - TRASERO      D-T = FRONT - REAR  
 S-V = MACIZO - VENTILADO       S-V = SOLID - VENTED

EDICION 06/2011

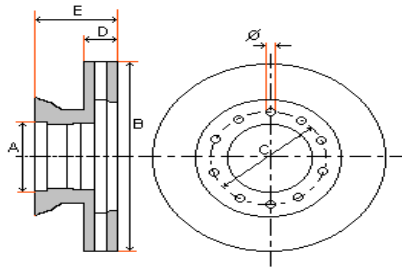
MODELO	AÑO	Observaciones	D	S	REF.	A	B	C	D	D	E	X		KG
			T	V	ADR98					MIN		Ø	Nº	

MERCEDES													Autobús		
307D, 308, 308D, 310	82-95		D	S	1853280.0	88	280	112	16	13	79	12.5 18	5 5	7	
O409 508D, 510, 511D 608, 609D, 709, 711D LLANTA 15"	96-		D	V	1853304.0	118	304	140	30	26	91	M12 x 150	6	10	
709, 711D 809D, 811D, 814D LLANTA 16&17,5"	86-98		D	V	1853324.0	118	324	140	30	26	91	M12 x 150	6	11	
814DA	88-		D	V	1853324.4	184	324	205	30	27	111	M12 X 150	6	11	
CITARO CITO O520 O530	00-		D-T	V	1853430.8	211	430	238	45	37	132	M14 x 150	10	30	
INTEGRO O550			D-T	V	1853430.8	211	430	238	45	37	132	M14 x 150	10	30	
O SERIES O340 - O350 O404 10/15R	94-		D-T	V	1853438.0	195	438	235	45	37	135	M14 x 150	10	32	
O SERIES O560	91-		D	V	1870432.0	194	432	220	45	37	135	M16 X 150	10	33	
SPRINTER 408D 412TD 414	96-		D	V	1853276.0	85	276	130	22	19	76	15 AV	5 2	6	
			T	S	1853272.0	85	272	130	16	14	96	15 AV	5 2	7	
TOURINO			D-T	V	1853430.8	211	430	238	45	37	132	M14 x 150	10	30	





EDICION 06/2011

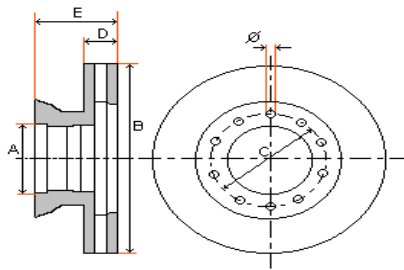


A = DIAMETRO ACOPLAMIENTO      A = HUB DIAMETER  
 B = DIAMETRO EXTERIOR          B = EXTERIOR DIAMETER  
 C = ENTRECENROS TALADRO      C = DISTANCE BETWEEN HOLES  
 D = ANCHO DEL DISCO            D = THICKNESS  
 E = ALTURA TOTAL                E = TOTAL HEIGHT  
 X = TALADROS                      X = HOLES  
 D-T = DELANTERO - TRASERO    D-T = FRONT - REAR  
 S-V = MACIZO - VENTILADO      S-V = SOLID - VENTED

MODELO	AÑO	Observaciones	D	S	REF.	A	B	C	D	D	E	X		KG
			T	V	ADR98					MIN		Ø	Nº	

<b>MERCEDES</b>	<b>Autobús</b>
-----------------	----------------

TOURISMO O340 - O350	95-		D	V	1853438.0	195	438	235	45	37	135	M14	10	32
			T	V								X		
TOURISMO O404 10/15R	91-		D	V	1853438.0	195	438	235	45	37	135	M14	10	32
			T	V								X		
TRAVEGO O580			D	V	1853430.8	211	430	238	45	37	132	M14	10	30
			T	V								X		
TRAVELINER TL7 TL12			D	V	1853276.2	67	276	112	22	19	60	15	5	6
			T	S	1853280.4	67	280	112	10	8	65	15	5	4
												AV	1	
												AV	1	
TRAVELINER TL13 TL14 TL16	98-		D	V	1853276.2	67	276	112	22	19	60	15	5	6
			D	V	1853276.0	85	276	130	22	19	76	15	5	6
												AV	2	
												AV	2	
VARIO 4.3TDI 810D 814D 814TD			D	V	1853324.0	118	324	140	30	26	91	M12	6	11
			D	S	1853324.6	118	324	140	30	26	91	M12	6	15
			T	V	1853324.8	120	324	192	30	27	120	M12	6	10
			T	V	1853324.2	157	324	192	30	26	120	M12	6	10
											X			
											X			
VARIO O409 512D 612D 614D 812D			D	V	1853304.0	118	304	140	30	26	91	M12	6	10
			T	V	1853304.4	120	304	192	30	27	120	M12	6	14
			T	V	1853304.6	157	304	192	30	26	120	M12	6	11
											X			
											X			
											X			

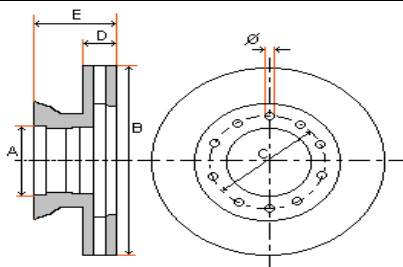


A = DIAMETRO ACOPLAMIENTO      A = HUB DIAMETER  
 B = DIAMETRO EXTERIOR          B = EXTERIOR DIAMETER  
 C = ENTRECENROS TALADRO      C = DISTANCE BETWEEN HOLES  
 D = ANCHO DEL DISCO            D = THICKNESS  
 E = ALTURA TOTAL                E = TOTAL HEIGHT  
 X = TALADROS                      X = HOLES  
 D-T = DELANTERO - TRASERO    D-T = FRONT - REAR  
 S-V = MACIZO - VENTILADO      S-V = SOLID - VENTED

EDICION 06/2011

MODELO	AÑO	Observaciones	D T	S V	REF. ADR98	A	B	C	D	D MIN	E	X		KG
												Ø	Nº	

MERITOR													Remolque / Trailer		
B DUCO	00-			S	1826336.0	91	336	120	30	26	101	14 M10	10 2	20	
				S	1826375.1	225	375	275	45	37	150	20 M10	8 2	33	
C DUCO	00-			S	1826375.0	105.7	375	138	45	38	130	14.5 M10	14 2	26	
				S	1826336.2	215	336	275	30	26	139	20 M10	8 2	25	
D DUCO EJE PARA TRAILERS	99-			V	1826430.1 1826900.4	222	434	250	45	40	150	M16 X 150	10	40	
D ELSA LLANTA 22,5"				V	1826430.1 1826900.4	222	434	250	45	40	150	M16 X 150	10	40	
D ELSA 2 LLANTA 22,5"	02-			V	1854434.0	131	434	165	45	41	97	17.2 M14	10 2	34	
				V	1826430.1 1826900.4	222	434	250	45	40	150	M16 X 150	10	40	
DX195 LLANTA 19,5" EJE TM				V	1826378.0	225	378	275	45	41	150	24.3 M12	8 2	30	
DX195 LLANTA 19,5" EJE LM - LC		CON ABS		V	1826378.3 1826378.5	222	378	250	45	42	150	M16 X 200	10 2	30	
ELSA 195 LLANTA 19,5" EJE TM				V	1826378.0	225	378	275	45	41	150	24.3 M12	8 2	30	
ELSA 195 LLANTA 19,5" EJE LM - LC		CON ABS		V	1826378.3 1826378.5	222	378	250	45	42	150	M16 X 200	10 2	30	



A = DIAMETRO ACOPLAMIENTO      A = HUB DIAMETER  
 B = DIAMETRO EXTERIOR          B = EXTERIOR DIAMETER  
 C = ENTRECENTROS TALADRO      C = DISTANCE BETWEEN HOLES  
 D = ANCHO DEL DISCO              D = THICKNESS  
 E = ALTURA TOTAL                E = TOTAL HEIGHT  
 X = TALADROS                      X = HOLES  
 D-T = DELANTERO - TRASERO      D-T = FRONT - REAR  
 S-V = MACIZO - VENTILADO       S-V = SOLID - VENTED

EDICION 06/2011

MODELO	AÑO	Observaciones	D	S	REF.	A	B	C	D	D	E	X		KG
			T	V	ADR98					MIN		Ø	Nº	

**MITSUBISHI** *Vehiculo ligero*

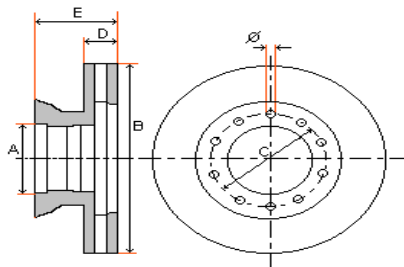
CANTER 35 3,5 TON.	09/01-		D	V	1859290.5	104	290	126	20	18	73	10.3	6	8
			D-T	V	1859293.5	124	293	144	40	36	70	10	12	14
CANTER 63 6,3 TON.	09/01-		D-T	V	1859293.6	110	293	136	40	36	54	M12	5	10
			D-T	V	1859293.7	114	293	140	40	36	54	M12	6	10
CANTER 75 7,5 TON.	09/01-		D-T	V	1859309.5	114	309	140	40	36	54	M12	6	12
			D-T	V	1859310.5	139	310	161	40	36	70	10	12	16

**MONTENEGRO** *Remolque / Trailer*

SB4345 EJES MONTENEGRO			D-T	V	1831430.6 1831706.6	290	430	335	45	37	160	23	10	28
			D-T	V	1853430.8	211	430	238	45	37	132	M14 x 150	10	30

**MSA** *Remolque / Trailer*

MSA EJE DISCO				V	1824450.0	185	450	210	45		116	14.5 15	9 3	25

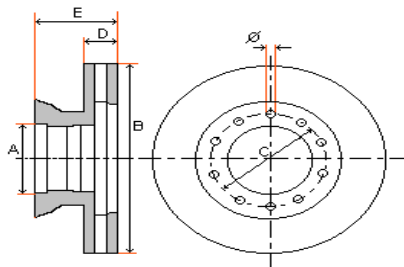


A = DIAMETRO ACOPLAMIENTO      A = HUB DIAMETER  
 B = DIAMETRO EXTERIOR          B = EXTERIOR DIAMETER  
 C = ENTRECENTROS TALADRO      C = DISTANCE BETWEEN HOLES  
 D = ANCHO DEL DISCO              D = THICKNESS  
 E = ALTURA TOTAL                E = TOTAL HEIGHT  
 X = TALADROS                      X = HOLES  
 D-T = DELANTERO - TRASERO      D-T = FRONT - REAR  
 S-V = MACIZO - VENTILADO       S-V = SOLID - VENTED

EDICION 06/2011

MODELO	AÑO	Observaciones	D	S	REF.	A	B	C	D	D	E	X		KG
			T	V	ADR98					MIN		Ø	Nº	

NEOPLAN													Autobús		
<b>BUS</b>			D	V	<b>1861315.0</b>	170	315	245	35	26	149	18.5	6	19	
												M10	2		
<b>CENTROLINER</b>			D-T	V	<b>1861430.0</b>	200	430	235	45	39	131	M16	10	30	
N4407												x			
N4410												150			
N4413															
N4414															
N4416			D-T	V	<b>1870430.0</b>	203	430	235	45	39	131	M16	10	31	
N4420												x			
N4421												150			
N4426															
<b>CITYLINER</b>	92-		D	V	<b>1853304.0</b>	118	304	140	30	26	91	M12	6	10	
N116												x			
N116 H												150			
N116/3			D	V	<b>1861430.0</b>	200	430	235	45	39	131	M16	10	30	
N116/3 H												x			
												150			
			D	V	<b>1870430.0</b>	203	430	235	45	39	131	M16	10	31	
												x			
												150			
<b>CLUBSTAR</b>	98-		D	V	<b>1853377.2</b>	105	377	138	45	37	134	14.5	14	23	
SB6000															
			T	V	<b>1853370.8</b>	176	377	201	45	37	139	M14	8	25	
												x			
												150			
<b>ECONOMY</b>	98-		D-T	V	<b>1853324.0</b>	118	324	140	30	26	91	M12	6	11	
LLANTA 17,5"												x			
												150			
<b>EUROLINER</b>			D-T	V	<b>1861430.0</b>	200	430	235	45	39	131	M16	10	30	
SB7000												x			
												150			
			D-T	V	<b>1870430.0</b>	203	430	235	45	39	131	M16	10	31	
												x			
												150			

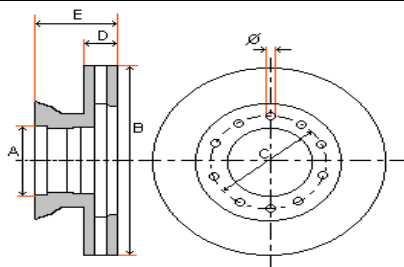


A = DIAMETRO ACOPLAMIENTO      A = HUB DIAMETER  
 B = DIAMETRO EXTERIOR          B = EXTERIOR DIAMETER  
 C = ENTRECENTROS TALADRO      C = DISTANCE BETWEEN HOLES  
 D = ANCHO DEL DISCO              D = THICKNESS  
 E = ALTURA TOTAL                E = TOTAL HEIGHT  
 X = TALADROS                      X = HOLES  
 D-T = DELANTERO - TRASERO      D-T = FRONT - REAR  
 S-V = MACIZO - VENTILADO       S-V = SOLID - VENTED

EDICION 06/2011

MODELO	AÑO	Observaciones	D	S	REF.	A	B	C	D	D	E	X		KG
			T	V	ADR98					MIN		Ø	Nº	

NEOPLAN													Autobús		
EUROSTAR O404 (10-15R)	10/91-		D-T	V	1853438.0	195	438	235	45	37	135	M14 x 150	10	32	
JETLINER N407 N409	9/85-		D-T	V	1850459.0	170	459	195	48	46	119	M16	10	35	
JETLINER N212H N213H N213SHD N214H N214SHD	92-		D	V	1853304.0	118	304	140	30	26	91	M12 x 150	6	10	
			D-T	V	1861430.0	200	430	235	45	39	131	M16 x 150	10	30	
			D-T	V	1870430.0	203	430	235	45	39	131	M16 x 150	10	31	
N SERIES BUS N4008 - N4026	92-		D	V	1853304.0	118	304	140	30	26	91	M12 x 150	6	10	
			D	V	1861430.0	200	430	235	45	39	131	M16 x 150	10	30	
			D	V	1870430.0	203	430	235	45	39	131	M16 x 150	10	31	
REGIOLINER	02-		D-T	V	1870430.0	203	430	235	45	39	131	M16 x 150	10	31	
SKYLINER N122/3	-92		D	V	1861410.0	162	410	185	48	44	120	M16 x 150	12	32	



A = DIAMETRO ACOPLAMIENTO      A = HUB DIAMETER  
 B = DIAMETRO EXTERIOR          B = EXTERIOR DIAMETER  
 C = ENTRECENTROS TALADRO      C = DISTANCE BETWEEN HOLES  
 D = ANCHO DEL DISCO              D = THICKNESS  
 E = ALTURA TOTAL                E = TOTAL HEIGHT  
 X = TALADROS                      X = HOLES  
 D-T = DELANTERO - TRASERO      D-T = FRONT - REAR  
 S-V = MACIZO - VENTILADO      S-V = SOLID - VENTED

EDICION 06/2011

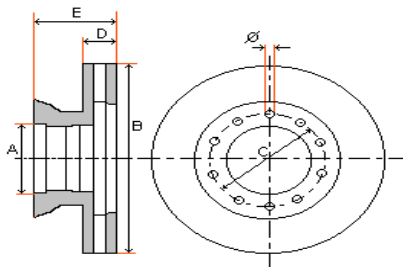
MODELO	AÑO	Observaciones	D T	S V	REF. ADR98	A	B	C	D	D MIN	E	X		KG
												Ø	Nº	

<b>NEOPLAN</b>	<b>Autobús</b>
----------------	----------------

SKYLINER N122/3	92-		D	V	1853304.0	118	304	140	30	26	91	M12 x 150	6	10
			D	V	1861430.0	200	430	235	45	39	131	M16 x 150	10	30
			D	V	1870430.0	203	430	235	45	39	131	M16 x 150	10	31
SPACELINER N117/2 N117/3	92-		D	V	1853304.0	118	304	140	30	26	91	M12 x 150	6	10
			D-T	V	1861430.0	200	430	235	45	39	131	M16 x 150	10	30
			D-T	V	1870430.0	203	430	235	45	39	131	M16 x 150	10	31
STARLINER SB7000	92-		D	V	1861430.0	200	430	235	45	39	131	M16 x 150	10	30
			D	V	1870430.0	203	430	235	45	39	131	M16 x 150	10	31



EDICION 06/2011

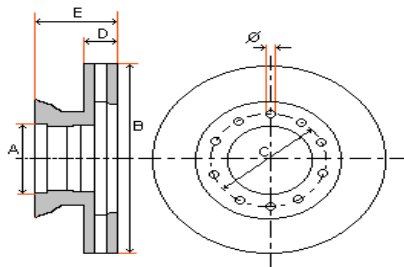


A = DIAMETRO ACOPLAMIENTO      A = HUB DIAMETER  
 B = DIAMETRO EXTERIOR          B = EXTERIOR DIAMETER  
 C = ENTRECENROS TALADRO      C = DISTANCE BETWEEN HOLES  
 D = ANCHO DEL DISCO            D = THICKNESS  
 E = ALTURA TOTAL                E = TOTAL HEIGHT  
 X = TALADROS                      X = HOLES  
 D-T = DELANTERO - TRASERO    D-T = FRONT - REAR  
 S-V = MACIZO - VENTILADO      S-V = SOLID - VENTED

MODELO	AÑO	Observaciones	D	S	REF.	A	B	C	D	D	E	X		KG
			T	V	ADR98					MIN		Ø	Nº	

<b>NEOPLAN</b>	<b>Autobús</b>
----------------	----------------

TEAMSTAR LLANTA 17,5"	98-		D-T	V	1853324.0	118	324	140	30	26	91	M12 x 150	6	10
TRANSLINER N312 N316	92-		D	V	1853304.0	118	304	140	30	26	91	M12 x 150	6	10
TRANSLINER N312 N316	92-		D	V	1861430.0	200	430	235	45	39	131	M16 x 150	10	30
			D	V	1870430.0	203	430	235	45	39	131	M16 x 150	10	31
TRANSLINER SHD 12M EJES MAN			D	V	1852438.0	200	438	235	45	40	135	M16 x 150	10	32
TRANSLINER SHD 12M EJES MERCEDES			D-T	V	1853438.0	195	438	235	45	37	135	M14 x 150	10	32



A = DIAMETRO ACOPLAMIENTO      A = HUB DIAMETER  
 B = DIAMETRO EXTERIOR          B = EXTERIOR DIAMETER  
 C = ENTRECENTROS TALADRO      C = DISTANCE BETWEEN HOLES  
 D = ANCHO DEL DISCO              D = THICKNESS  
 E = ALTURA TOTAL                E = TOTAL HEIGHT  
 X = TALADROS                      X = HOLES  
 D-T = DELANTERO - TRASERO      D-T = FRONT - REAR  
 S-V = MACIZO - VENTILADO       S-V = SOLID - VENTED

EDICION 06/2011

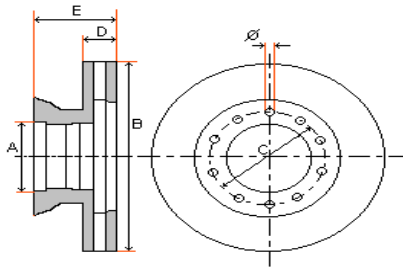
MODELO	AÑO	Observaciones	D	S	REF.	A	B	C	D	D	E	X		KG
			T	V	ADR98					MIN		Ø	Nº	

NISSAN															Vehiculo ligero		
ATLEON 100 - 110	99-02		D	V	1860263.0	96	263	118	24	22	53	M12 x 150	6	6			
ATLEON 120 35 - 45 - 56	2/99-		D	V	1860280.1	96	282	118	24	22	49	M12 x 150	6	7			
			D	V	1860290.5	96	290	118	26	22	53	M12 x 150	6	8			
			T	V	1860290.1	110	290	127	22	1	78	10.2	8	10			
ATLEON 140-160-165  CON ABS	2/99-		D	V	1860322.1	160	322	205	30	28	115	20 M8	6 2	11			
			D	V	1860380.1	158	380	184	45	37	124	M12 X 150	12	21			
ATLEON 160	06-		T	V	1860375.0	169	375	196	45	37	138	M14 X 150	10	24			
CABSTAR 110	5/98-		D	V	1860264.0	96	264	118	24	22	53	M12 X 150	5	6			
CABSTAR 120	5/98-		D-T	V	1860275.0	96	276	118	24	22	49	M12 X 150	5	5			
CABSTAR E 110.35, 110.45 120.35, 120.45	10/98-		D-T	V	1860275.0	96	276	118	24	22	49	M12 X 150	5	5			
			D	V	1860290.5	96	290	118	26	22	53	M12 x 150	6	8			
			T	V	1860290.1	110	290	127	22	1	78	10.2	8	10			
ECO T100	06/93-		D	V	1860263.0	96	263	118	24	22	53	M12 x 150	6	6			
ECO T135 - T160  CON ABS	5/97-		D	V	1860322.1	160	322	205	30	28	115	20 M8	6 2	11			
			D	V	1860380.1	158	380	184	45	37	124	M12 X 150	12	21			





EDICION 06/2011



A = DIAMETRO ACOPLAMIENTO      A = HUB DIAMETER  
 B = DIAMETRO EXTERIOR          B = EXTERIOR DIAMETER  
 C = ENTRECENROS TALADRO        C = DISTANCE BETWEEN HOLES  
 D = ANCHO DEL DISCO              D = THICKNESS  
 E = ALTURA TOTAL                E = TOTAL HEIGHT  
 X = TALADROS                      X = HOLES  
 D-T = DELANTERO - TRASERO      D-T = FRONT - REAR  
 S-V = MACIZO - VENTILADO        S-V = SOLID - VENTED

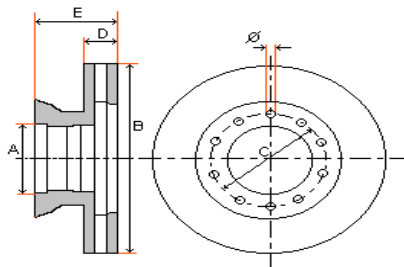
MODELO	AÑO	Observaciones	D	S	REF. ADR98	A	B	C	D	D MIN	E	X		KG
			T	V								Ø	Nº	

**NISSAN** *Vehículo ligero*

INTERSTAR LH35 LM35 MH35 MM33 MM35 SL28 SL33 SM33	10/01-		D	V	1854280.0	79.5	280	110	24	22	61.5	M10 X 150	6	10
			D	V	1854305.0	90	305	130	28	25	78	16 AV	5 1	10
			T	S	1854305.5	90	305	130	12	10	67	16 AV	5 1	10
			D	V	1860263.0	96	263	118	24	22	53	M12 x 150	6	6
L35	06/88-		D	V	1860263.0	96	263	118	24	22	53	M12 x 150	6	6
L45	06/88-		D	V	1860263.0	96	263	118	24	22	53	M12 x 150	6	6
			D	V	1860264.0	96	264	118	24	22	53	M12 X 150	5	6
L80  CON ABS	5/97-		D	V	1860322.1	160	322	205	30	28	115	20 M8	6 2	11
TRADE	06/85-		D	V	1860263.0	96	263	118	24	22	53	M12 x 150	6	6
			D	V	1860264.0	96	264	118	24	22	53	M12 X 150	5	6

**NOGE** *Autobús*

CATALAN 320 SB7000	98-		D	V	1853377.2	105	377	138	45	37	134	14.5	14	23
			T	V	1853370.8	176	377	201	45	37	139	M14 x 150	8	25
CATALAN 350-370  CON ABS	98-		D	V	1852432.0	208	433	235	45	39	135	M16 x 150	10	34
			D	V	1852432.4	208	432	235	45	39	135	M16 X 150	10	34



A = DIAMETRO ACOPLAMIENTO      A = HUB DIAMETER  
 B = DIAMETRO EXTERIOR          B = EXTERIOR DIAMETER  
 C = ENTRECENROS TALADRO      C = DISTANCE BETWEEN HOLES  
 D = ANCHO DEL DISCO            D = THICKNESS  
 E = ALTURA TOTAL                E = TOTAL HEIGHT  
 X = TALADROS                      X = HOLES  
 D-T = DELANTERO - TRASERO    D-T = FRONT - REAR  
 S-V = MACIZO - VENTILADO      S-V = SOLID - VENTED

EDICION 06/2011

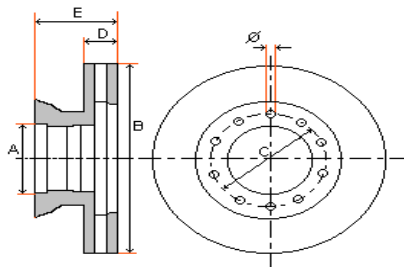
MODELO	AÑO	Observaciones	D	S	REF.	A	B	C	D	D	E	X		KG		
			T	V	ADR98											
															Ø	Nº

**OPEL** *Vehículo ligero*

MOVANO 2.5D 2.8TD	3/98-		D	V	1854280.0	79.5	280	110	24	22	61.5	M10 X 150	6	10
			D	V	1854305.0	90	305	130	28	25	78	16 AV	5 1	10
			T	S	1854305.5	90	305	130	12	10	67	16 AV	5 1	10
VIVARO	8/01-		D	V	1854305.3	72	305	118	28	24	50	15.6 AV	5 1	9
			T	S	1854305.2	64.5	280	118	12	10.5	102		5	

**OPTARE** *Autobús*

ALERO	9/01-		T	V	1854290.0	115 150	290	132	22	19	78	10.5	8	10
BONITO 260-280-300-330-350	9/01-		D	V	1859294.0	82	294	100	24.5	22	43.2	M10 x 150	5	8
NOUVELLE SR	1/96-		D	V	1853324.0	118	324	140	30	26	91	M12 x 150	6	11
			T	V	1853324.2	157	324	192	30	26	120	M12 x 150	6	10
			D	S	1853324.6	118	324	140	30	26	91	M12 X 150	6	15
			T	V	1853324.8	120	324	192	30	27	120	M12 X 150	6	10
			T	V	1853324.2	157	324	192	30	26	120	M12 X 150	6	10

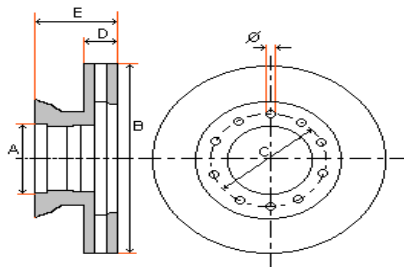


A = DIAMETRO ACOPLAMIENTO      A = HUB DIAMETER  
 B = DIAMETRO EXTERIOR          B = EXTERIOR DIAMETER  
 C = ENTRECENTROS TALADRO      C = DISTANCE BETWEEN HOLES  
 D = ANCHO DEL DISCO              D = THICKNESS  
 E = ALTURA TOTAL                E = TOTAL HEIGHT  
 X = TALADROS                        X = HOLES  
 D-T = DELANTERO - TRASERO      D-T = FRONT - REAR  
 S-V = MACIZO - VENTILADO        S-V = SOLID - VENTED

EDICION 06/2011

MODELO	AÑO	Observaciones	D	S	REF.	A	B	C	D	D	E	X		KG
			T	V	ADR98					MIN		Ø	Nº	

OPTARE														Autobús	
SOROCO NT	1/96-		D	V	1853276.0	85	276	130	22	19	76	15 AV	5 2	6	
			T	S	1853258.0	85	258	130	12	10	96	15 AV	5 2	6	
			T	S	1853272.0	85	272	130	16	14	96	15 AV	5 2	7	
			T	V	1853285.0	120	285	145	22	19	93	15	6	7	
SOROCO PLUS	2/01-		D	V	1853290.0	70	290	96	26	23	70	14.5	8	8	
			T	V	1853304.1	118	304	192	30	26	115	M12 X 150	6	11	
SOROCO	6/06-		D	V	1853300.0	85	300	130	28	25	69	15.3 AV	6 1	7	
			T	V	1853303.0	120	303	145	28	25	93	15.1	6	9	
SOLERA SOLERA2 SOLERA CORTA SOLERA SR SOLERA HD	00-03 03-06 03-06 06-		D	V	1853377.2	105	377	138	45	37	134	14.5	14	23	
			T	V	1853370.8	176	377	201	45	37	139	M14 x 150	8	25	
SOLO	1/01-		D	V	1850330.1	117	330	138	34	31	123	M12 x 175	12	20	
			T	V	1850330.3	150	330	175	34	31	119	M12 x 175	12	20	
STAR RIDER	1/86-		D	V	1853324.0	118	324	140	30	26	91	M12 x 150	6	11	



A = DIAMETRO ACOPLAMIENTO      A = HUB DIAMETER  
 B = DIAMETRO EXTERIOR          B = EXTERIOR DIAMETER  
 C = ENTRECENTROS TALADRO      C = DISTANCE BETWEEN HOLES  
 D = ANCHO DEL DISCO              D = THICKNESS  
 E = ALTURA TOTAL                E = TOTAL HEIGHT  
 X = TALADROS                      X = HOLES  
 D-T = DELANTERO - TRASERO      D-T = FRONT - REAR  
 S-V = MACIZO - VENTILADO       S-V = SOLID - VENTED

EDICION 06/2011

MODELO	AÑO	Observaciones	D T	S V	REF. ADR98	A	B	C	D	D MIN	E	X		KG
												Ø	Nº	

**PERLINI** *Maquinaria O.P.*

				V	1880490.0	198	490	225	45		55	19	16	

**PERROT** *Maquinaria O.P.*

				S	1880492.0	220	492	245	26		48	19	16	25

**PH** *Maquinaria O.P.*

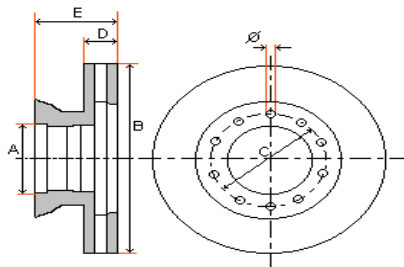
OMEGA S20				S	1880490.2	198	490	225	26		60	19	18	41

**POCLAIN** *Maquinaria O.P.*

				S	1880458.5	176	458	210	14		30	17	10	15

**PROIN** *Maquinaria O.P.*

CORTADORA				S	1880610.0	260	610	323	12		54	21.5 20	8 4	17

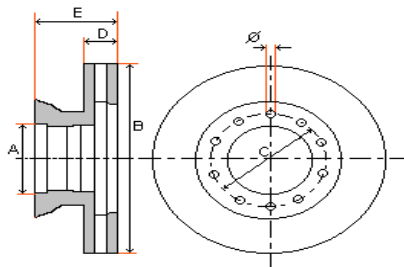


A = DIAMETRO ACOPLAMIENTO      A = HUB DIAMETER  
 B = DIAMETRO EXTERIOR          B = EXTERIOR DIAMETER  
 C = ENTRECENTROS TALADRO      C = DISTANCE BETWEEN HOLES  
 D = ANCHO DEL DISCO              D = THICKNESS  
 E = ALTURA TOTAL                E = TOTAL HEIGHT  
 X = TALADROS                      X = HOLES  
 D-T = DELANTERO - TRASERO      D-T = FRONT - REAR  
 S-V = MACIZO - VENTILADO       S-V = SOLID - VENTED

EDICION 06/2011

MODELO	AÑO	Observaciones	D	S	REF.	A	B	C	D	D	E	X		KG
			T	V	ADR98					MIN		Ø	Nº	

RENAULT															Vehículo ligero	
MASCOT 3.5 TON. 5 TON.	5/99-		D	V	1854290.2	102	290	120	22	19	42	10.5	10	8		
			T	V	1854290.0	115 150	290	132	22	19	78	10.5	8	10		
MASCOT 5.5 TON. 6 TON. 6.5 TON.	5/99-		D	V	1854290.4	102	290	120	26	23	42	10.5	10	9		
			T	V	1854290.0	115 150	290	132	22	19	78	10.5	8	10		
MASCOT DXI 3.5 TON. 5 TON.	06-		D	V	1854290.2	102	290	120	22	19	42	10.5	10	8		
			T	V	1854290.0	115 150	290	132	22	19	78	10.5	8	10		
MASCOT DXI 5.5 TON. 6 TON. 6,5 TON.	06-		D	V	1854290.4	102	290	120	26	23	42	10.5	10	9		
			T	V	1854290.0	115 150	290	132	22	19	78	10.5	8	10		
MASTER	80-97		D	V	1854278.0	95	278	120	24	22	70	M12 X 150	6	8		
MASTER II T28, T33, T35	98-00		D	V	1854305.0	90	305	130	28	25	78	16 AV	5 1	10		
MASTER II T39, T33, T35	10/00-		D	V	1854280.0	79.5	280	110	24	22	61.5	M10 X 150	6	10		
			D	V	1854305.0	90	305	130	28	25	78	16 AV	5 1	10		
			T	S	1854305.5	90	305	130	12	10	67	16 AV	5 1	10		
MESSENGER B70, B80, B90 B100, B120 (LN) 4X2	82-93		D	V	1854276.2	95	276	114	24	22	44	10.5	10	7		
MESSENGER B70, B80, B90 B100, B120 (LN) 4X2	93-98		D	V	1854276.4	102	276	120	24	22	44	10.5	10	7		
TRAFIC	80-01		D	V	1854252.0	76	252	95	24	22	53	M8	6	6		

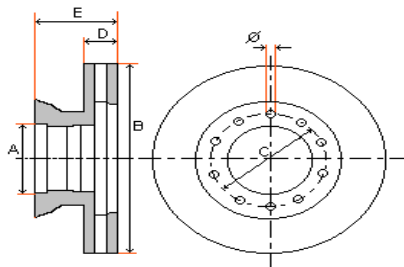


A = DIAMETRO ACOPLAMIENTO      A = HUB DIAMETER  
 B = DIAMETRO EXTERIOR          B = EXTERIOR DIAMETER  
 C = ENTRECENTROS TALADRO      C = DISTANCE BETWEEN HOLES  
 D = ANCHO DEL DISCO              D = THICKNESS  
 E = ALTURA TOTAL                E = TOTAL HEIGHT  
 X = TALADROS                        X = HOLES  
 D-T = DELANTERO - TRASERO      D-T = FRONT - REAR  
 S-V = MACIZO - VENTILADO        S-V = SOLID - VENTED

EDICION 06/2011

MODELO	AÑO	Observaciones	D	S	REF.	A	B	C	D	D	E	X		KG
			T	V	ADR98					MIN		Ø	Nº	

RENAULT														Camión	
MAGNUM SERIES AE380, 385, 390 (4X2)	90-93		D	V	1854440.0	131	440	165	45	40	100	17.2	10	29	
MAGNUM SERIES AE380, 385, 390 (4X2) AE420, 430, 470 (4X2) AE500, 520, 560 (4X2)	93-00		D	V	1854438.0	131	438	165	45	41	97	17.2	10	34	
MAGNUM E-TECH 400, 440, 480	00-06		D	V	1854434.0	131	434	165	45	41	97	17.2	10	34	
		T	S	1854434.2	224	434	255	45	40	160	M14	X	150	12	43
MAGNUM DXI	06-		D-T	V	1857377.0	181	377			45	41	45			20
		D-T	V	1857410.0	220	410			45	41	45				25
MAJOR R340, 350, 380, 385 R420, 429	90-93		D	V	1854440.0	131	440	165	45	40	100	17.2	10	29	
MAJOR R340, 350, 380, 385 R420, 429	93-00		D	V	1854438.0	131	438	165	45	41	97	17.2	10	34	
MANAGER G230, 260, 270, 280 G290, 300, 330, 340	90-93		D	V	1854440.0	131	440	165	45	40	100	17.2	10	29	
MANAGER G230, 260, 270, 280 G290, 300, 330, 340	93-00		D	V	1854438.0	131	438	165	45	41	97	17.2	10	34	
MIDLINER M SERIES M120.12 M250.13	89-01		D	V	1854354.0	128	354	151	30	28	82	12.5	10	14	
MIDLINER PP160	92-93		D	V	1854354.0	128	354	151	30	28	82	12.5	10	14	
MIDLINER S SERIES S130, 135, 140, 150 S160, 170, 180, 210	89-95		D	V	1854354.0	128	354	151	30	28	82	12.5	10	14	
MIDLINER S SERIES S135, 140, 150	95-01		D	V	1854304.0	250	304	205	30	27	135	21	6	15	
MIDLINER S SERIES S135, 140, 150	95-01		D	V	1854322.0	290	322	245	30	27	140	21	6	16	

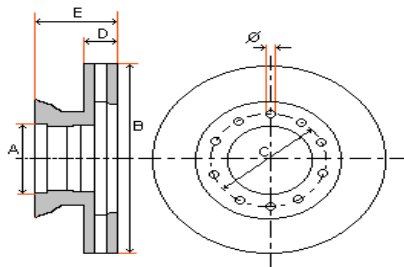


A = DIAMETRO ACOPLAMIENTO      A = HUB DIAMETER  
 B = DIAMETRO EXTERIOR          B = EXTERIOR DIAMETER  
 C = ENTRECENTROS TALADRO      C = DISTANCE BETWEEN HOLES  
 D = ANCHO DEL DISCO              D = THICKNESS  
 E = ALTURA TOTAL                E = TOTAL HEIGHT  
 X = TALADROS                      X = HOLES  
 D-T = DELANTERO - TRASERO      D-T = FRONT - REAR  
 S-V = MACIZO - VENTILADO       S-V = SOLID - VENTED

EDICION 06/2011

MODELO	AÑO	Observaciones	D	S	REF.	A	B	C	D	D	E	X		KG
			T	V	ADR98					MIN		Ø	Nº	

RENAULT														Camión		
MIDLUM 135 - 150 LLANTA 17,5"	11/99-		D	V	1854330.0	95	330	118	34	28	80	15	10	12		
			D-T	V	1854330.2	194	330	245	34	28	137	21	6	16		
MIDLUM LLANTA 19,5"	99-06		D	V	1854375.2	117	375	144	45	38	99	15	10	22		
			D	V	1854380.0	117	380	144	45	40	85	15	10	22		
			T	V	1854375.0	222	375	275	45	38	166	22.5	8	28		
			T	V	1854375.4	262	375	335	45	38	166	32.5	10	30		
MIDLUM DXI LLANTA 19,5"	06-		D	V	1854375.5	111	375		45		117	15	10			
			T	V	1854375.6	222	375	275	45		166	22.5	8			
PREMIUM 210,250,260,300,340 D-LISA D3	96-02		D	V	1854438.0	131	438	165	45	41	97	17.2	10	34		
PREMIUM 220, 270, 320 370, 420 D-ELSA 2	02-06		D	V	1854438.0	131	438	165	45	41	97	17.2	10	34		
			T	V	1852432.2	208	433	235	45	39	135	M16	10	34		
PREMIUM DXI CENTRAL	06-		D-T	V	1857377.0	181	377		45	41	45			20		
PREMIUM DXI NO DIRECCIONAL	06-		D-T	V	1857410.0	220	410		45	41	45			25		
PREMIUM DXI DIRECCIONAL	06-				1857434.2	220	434		45	41	45			35		
R SERIES	-5/92		D	V	1854440.0	131	440	165	45	40	100	17.2	10	29		
R SERIES	5/92-		D	V	1854438.0	131	438	165	45	41	97	17.2	10	34		



A = DIAMETRO ACOPLAMIENTO      A = HUB DIAMETER  
 B = DIAMETRO EXTERIOR          B = EXTERIOR DIAMETER  
 C = ENTRECENTROS TALADRO      C = DISTANCE BETWEEN HOLES  
 D = ANCHO DEL DISCO              D = THICKNESS  
 E = ALTURA TOTAL                E = TOTAL HEIGHT  
 X = TALADROS                      X = HOLES  
 D-T = DELANTERO - TRASERO      D-T = FRONT - REAR  
 S-V = MACIZO - VENTILADO      S-V = SOLID - VENTED

EDICION 06/2011

MODELO	AÑO	Observaciones	D T	S V	REF. ADR98	A	B	C	D	D MIN	E	X		KG
												Ø	Nº	

<b>RENAULT</b>													<b>Autobús</b>		
----------------	--	--	--	--	--	--	--	--	--	--	--	--	----------------	--	--

AGORA D-LISA D3	1/95-		D	V	1854438.0	131	438	165	45	41	97	17.2 M14	10 2	34
ARES	1/95-		D	V	1854438.0	131	438	165	45	41	97	17.2 M14	10 2	34
FR1 & ILLIADE FR BUS L1, L3	93-		D	V	1854400.0	175	400	197	42	39	90	12.5	12	24
ILLIADE D-LISA D3	98-		D	V	1854438.0	131	438	165	45	41	97	17.2 M14	10 2	34
ILLIADE D-ELSA 2	00-		D	V	1854438.0	131	438	165	45	41	97	17.2 M14	10 2	34
MIDLINER PP160.09			D	V	1854354.0	128	354	151	30	28	82	12.5	10	14
STARBUS R312 PCV FR1	89-		D-T	V	1854350.0	145	350	165	30		73	12.5	16	14

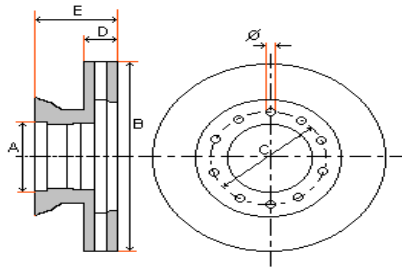
<b>ROCKWELL</b>													<b>Autobús</b>		
-----------------	--	--	--	--	--	--	--	--	--	--	--	--	----------------	--	--

			T	V	1851436.2	210	436	238	45	39	138	M16 X 200	10	36





EDICION 06/2011



A = DIAMETRO ACOPLAMIENTO      A = HUB DIAMETER  
 B = DIAMETRO EXTERIOR          B = EXTERIOR DIAMETER  
 C = ENTRECENROS TALADRO        C = DISTANCE BETWEEN HOLES  
 D = ANCHO DEL DISCO              D = THICKNESS  
 E = ALTURA TOTAL                E = TOTAL HEIGHT  
 X = TALADROS                      X = HOLES  
 D-T = DELANTERO - TRASERO      D-T = FRONT - REAR  
 S-V = MACIZO - VENTILADO        S-V = SOLID - VENTED

MODELO	AÑO	Observaciones	D T	S V	REF. ADR98	A	B	C	D	D MIN	E	X		KG
												Ø	Nº	

**S.A.E - DUPILLIER** **Remolque / Trailer**

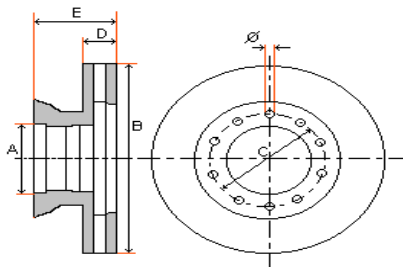
<b>SB4345</b> Llanta 22.5"				V	<b>1831430.6</b> <b>1831706.6</b>	290	430	335	45	37	160	23	10	28
EJES MERITOR			T	S	<b>1831434.0</b>	260	434	335	45	40	162	32.5	10	45

**SAF - HOLLAND** **Remolque / Trailer**

<b>SKRB 9019</b> LLANTA 19,5"				V	<b>1828370.3</b>	131	375	168	45	37	140	19 M12	12 3	25
<b>SKRB 9019</b> LLANTA 19,5" INTEGRAL	04-			V	<b>1828370.5</b>	170	376	190	45	37	57	13	10	20
<b>SKRB 9022</b> LLANTA 22,5"				V	<b>1828430.5</b>	131	430	168	45	37	130	19 M12	12 3	33
<b>SKRB 9022</b> LLANTA 22,5" INTEGRA	04-			V	<b>1828430.7</b>	164	430	190	45	37	48	13	10	25
<b>SKRS / RZ 9019-11019</b> LLANTA 19,5"				V	<b>1828370.1</b>	244	377	275	45	37	158	22.7	8	27
<b>SKRS / RZ 9022-11022</b> LLANTA 22,5"				V	<b>1828430.3</b>	190	430	335	45	37	160	23	10	39

**SCANIA** **Camión**

<b>4 SERIES</b>	96-		D-T	V	<b>1856430.8</b>	208	430	237	45	37	131	M16 x 150	10	28



A = DIAMETRO ACOPLAMIENTO      A = HUB DIAMETER  
 B = DIAMETRO EXTERIOR          B = EXTERIOR DIAMETER  
 C = ENTRECENTROS TALADRO      C = DISTANCE BETWEEN HOLES  
 D = ANCHO DEL DISCO              D = THICKNESS  
 E = ALTURA TOTAL                E = TOTAL HEIGHT  
 X = TALADROS                      X = HOLES  
 D-T = DELANTERO - TRASERO      D-T = FRONT - REAR  
 S-V = MACIZO - VENTILADO      S-V = SOLID - VENTED

EDICION 06/2011

MODELO	AÑO	Observaciones	D	S	REF.	A	B	C	D	D	E	X		KG		
			T	V	ADR98											
															Ø	Nº

**SCANIA** **Autobús**

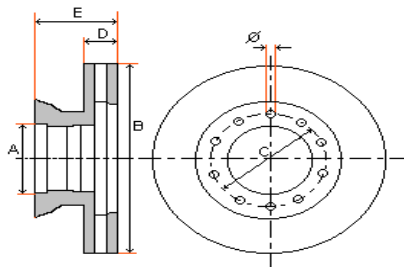
<b>4 SERIES</b> N14, N114, N124	96-		D-T	V	<b>1856430.8</b>	208	430	237	45	37	131	M16 x 150	10	28
<b>BUS SERIE</b> IRIZAR DIFERENCIAL ZF			D-T	V	<b>1870430.0</b>	203	430	235	45	39	131	M16 x 150	10	31
<b>OMNICITY</b> CN94			D-T	V	<b>1856430.8</b>	208	430	237	45	37	131	M16 x 150	10	28
			D	V	<b>1870430.0</b>	203	430	235	45	39	131	M16 x 150	10	31
<b>OMNIDECKER</b>			D-T	V	<b>1870430.0</b>	203	430	235	45	39	131	M16 x 150	10	31

**SCHMITZ** **Remolque / Trailer**

<b>CARGOBULL</b> LLANTA 22,5"				V	<b>1829430.0</b>	290	430	335	45	37	168	22.7	10	35

**SEDDON ATKINSON** **Camión**

<b>EUROMOVER</b> <b>STRATO T6</b>	97-		D-T	V	<b>1851435.0</b>	210	436	240	45	37	139	M16 X 200	12	34



A = DIAMETRO ACOPLAMIENTO      A = HUB DIAMETER  
 B = DIAMETRO EXTERIOR          B = EXTERIOR DIAMETER  
 C = ENTRECENTROS TALADRO      C = DISTANCE BETWEEN HOLES  
 D = ANCHO DEL DISCO              D = THICKNESS  
 E = ALTURA TOTAL                E = TOTAL HEIGHT  
 X = TALADROS                      X = HOLES  
 D-T = DELANTERO - TRASERO      D-T = FRONT - REAR  
 S-V = MACIZO - VENTILADO       S-V = SOLID - VENTED

EDICION 06/2011

MODELO	AÑO	Observaciones	D	S	REF.	A	B	C	D	D	E	X		KG
			T	V	ADR98					MIN		Ø	Nº	

**SITCAR** **Autobús**

PSV	96-		D	V	1853324.0	118	324	140	30	26	91	M12 X 150	6	11
			D	S	1853324.6	118	324	140	30	26	91	M12 X 150	6	15
			T	V	1853324.8	120	324	192	30	27	120	M12 X 150	6	10
			T	V	1853324.2	157	324	192	30	26	120	M12 X 150	6	10

**SMB** **Remolque / Trailer**

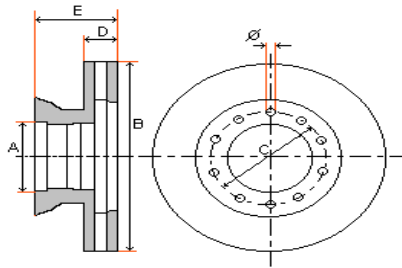
D1, H1, K1 PAN22 SB7000 DB22				V	1810430.1 1810430.7	280	430	335	45	37	155	26.5	10	34
				V	1810370.1 1832815.7	169	377	195	45	37	138	M14 x 150	8	25

**SOLARIS** **Autobús**

CITY BUS SB7000			D-T	V	1870430.0	203	430	235	45	39	131	M16 x 150	10	31
--------------------	--	--	-----	---	-----------	-----	-----	-----	----	----	-----	-----------------	----	----



EDICION 06/2011



A = DIAMETRO ACOPLAMIENTO      A = HUB DIAMETER  
 B = DIAMETRO EXTERIOR          B = EXTERIOR DIAMETER  
 C = ENTRECENROS TALADRO        C = DISTANCE BETWEEN HOLES  
 D = ANCHO DEL DISCO              D = THICKNESS  
 E = ALTURA TOTAL                E = TOTAL HEIGHT  
 X = TALADROS                        X = HOLES  
 D-T = DELANTERO - TRASERO      D-T = FRONT - REAR  
 S-V = MACIZO - VENTILADO        S-V = SOLID - VENTED

MODELO	AÑO	Observaciones	D	S	REF.	A	B	C	D	D	E	X		KG
			T	V	ADR98					MIN		Ø	Nº	

**SOR** **Autobús**

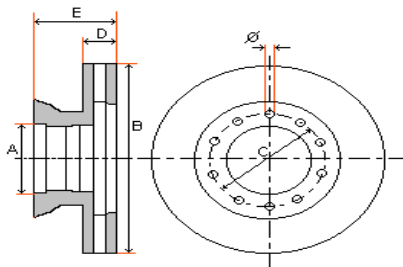
9.5 SERIES	99-		D	V	1852377.0	162	377	195	45	38	128	M14 X 150	10	23
9.5 SERIES CITYBUS B9.5 INTERCITY C9.5	02-		T	S	1826375.1	225	375	275	45	37	150	20 M10	8 2	33
10.5 SERIES	99-		D	V	1852377.0	162	377	195	45	38	128	M14 X 150	10	23
10.5 SERIES CITYBUS B10.5 INTERCITY C10.5	02-		T	S	1826375.1	225	375	275	45	37	150	20 M10	8 2	33

**TEREX** **Maquinaria O.P.**

				S	1880476.1	198	476	225	16		16	17	16	20
				S	1880480.1	204	480	228	20		20	17	18	20
				S	1880660.1	336.7	660.5	381	19.3		19.3	20	24	36
				S	1880710.1	336.7	710	381	19.3		19.3	20	24	36

**TOYOTA** **Vehiculo ligero**

DYNA 150 LY60, LY61 2.8D (LY211)	90-		D	V	1859257.0	91	257	120	25	23	51.4	M10 X 125	6	6
HI-ACE KLH12/22, LXH12 RXH12R	01-		D	V	1859285.0	84	285	127	28	26	45.5	M10 X 125	6	7
HI-LUX	95-		D	V	1859262.0	114	262	147	30	29	101	M12 X 125	6	8



A = DIAMETRO ACOPLAMIENTO      A = HUB DIAMETER  
 B = DIAMETRO EXTERIOR          B = EXTERIOR DIAMETER  
 C = ENTRECENROS TALADRO      C = DISTANCE BETWEEN HOLES  
 D = ANCHO DEL DISCO            D = THICKNESS  
 E = ALTURA TOTAL                E = TOTAL HEIGHT  
 X = TALADROS                      X = HOLES  
 D-T = DELANTERO - TRASERO    D-T = FRONT - REAR  
 S-V = MACIZO - VENTILADO      S-V = SOLID - VENTED

EDICION 06/2011

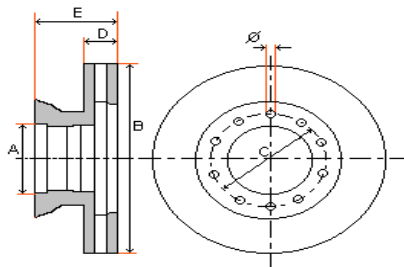
MODELO	AÑO	Observaciones	D	S	REF.	A	B	C	D	D	E	X		KG
			T	V	ADR98					MIN		Ø	Nº	

<b>UNIMOG</b>	<b>Camión</b>
---------------	---------------

UNIMOG 95			D-T	S	1853385.0	145	385	180	22	20.5	71	M18 X 150	8	16
UNIMOG U600 - U800 U1000 - U1200	73-91		D-T	S	1853374.0	80.3	374	108	22	20.5	22	16.5	10	15
UNIMOG U1500 - U1700			D-T	S	1853380.2	148	380	180	30	26	64	M18 X 150	8	19
			D-T	S	1853380.4	145	380	180	30	26	68	M18 X 150	8	16

<b>VAN HOOL</b>	<b>Autobús</b>
-----------------	----------------

ALICRON EJES MAN			D	V	1852438.0	200	438	235	45	40	135	M16 x 150	10	32
ALIZEE 12M EJES SCANIA	96-		D-T	V	1856430.8	208	430	237	45	37	131	M16 x 150	10	28
ALIZEE 12M EJES VOLVO	98-		D	V	1857438.0	195	438	235	45	37	127	M16 x 150	10	35
ASTRON EJES MAN			D	V	1852438.0	200	438	235	45	40	135	M16 x 150	10	32
ASTROBEL 12M EJES SCANIA	96-		D-T	V	1856430.8	208	430	237	45	37	131	M16 x 150	10	28
EOS 80, 90, 100, 200, 230	-92		D	V	1861410.0	162	410	185	48	44	120	M16 x 150	12	32
EOS 90, 100, 200, 230, 233 EJES SCANIA	96-		D-T	V	1856430.8	208	430	237	45	37	131	M16 x 150	10	28
URBAIN A300, A420/40, A500	-92		D	V	1861410.0	162	410	185	48	44	120	M16 x 150	12	32
EJES MAN			D	V	1852432.2	131	432	168	45	40	130	19 M12 X 150	12 3	33

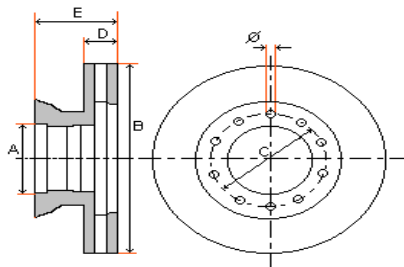


A = DIAMETRO ACOPLAMIENTO      A = HUB DIAMETER  
 B = DIAMETRO EXTERIOR          B = EXTERIOR DIAMETER  
 C = ENTRECENROS TALADRO      C = DISTANCE BETWEEN HOLES  
 D = ANCHO DEL DISCO            D = THICKNESS  
 E = ALTURA TOTAL                E = TOTAL HEIGHT  
 X = TALADROS                      X = HOLES  
 D-T = DELANTERO - TRASERO    D-T = FRONT - REAR  
 S-V = MACIZO - VENTILADO      S-V = SOLID - VENTED

EDICION 06/2011

MODELO	AÑO	Observaciones	D	S	REF. ADR98	A	B	C	D	D MIN	E	X		KG
			T	V								Ø	Nº	

VOLKSWAGEN													Vehículo ligero		
CRAFTER 3 - 3.5 TON	4/06-		D	V	1853300.0	85	300	130	28	25	69	15.3 AV	6 1	9	
			T	S	1853298.0	85	298	130	16	14	71	15.3 AV	6 1	7	
CRAFTER 5 TON.	4/06-		D	V	1853300.0	85	300	130	28	25	69	15.3 AV	6 1	9	
			T	V	1853303.0	120	303	145	28	25	93	15.3	6	7	
LT SERIES	96-01		D	V	1853276.0	85	276	130	22	19	76	15 AV	5 2	6	
LT SERIES 2.8 TON.	96-01		T	S	1853258.0	85	258	130	12	10	96	15 AV	5 2	6	
LT SERIES 3.5 TON.	96-01		T	S	1853272.0	85	272	130	16	14	96	15 AV	5 2	7	
LT SERIES 4.6 TON.	96-01		T	V	1853285.0	120	285	145	22	19	93	15	6	7	
LT SERIES	02-06		D	V	1853276.0	85	276	130	22	19	76	15 AV	5 2	6	
LT SERIES 2.8 TON.	02-06		T	S	1853258.0	85	258	130	12	10	96	15 AV	5 2	6	
LT SERIES 3.5 TON.	02-06		T	S	1853272.0	85	272	130	16	14	96	15 AV	5 2	7	
LT SERIES 4.6 TON.	02-06		T	V	1853285.0	120	285	145	22	19	93	15	6	7	

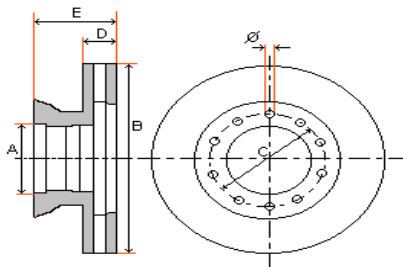


A = DIAMETRO ACOPLAMIENTO      A = HUB DIAMETER  
 B = DIAMETRO EXTERIOR          B = EXTERIOR DIAMETER  
 C = ENTRECENROS TALADRO      C = DISTANCE BETWEEN HOLES  
 D = ANCHO DEL DISCO            D = THICKNESS  
 E = ALTURA TOTAL                E = TOTAL HEIGHT  
 X = TALADROS                      X = HOLES  
 D-T = DELANTERO - TRASERO    D-T = FRONT - REAR  
 S-V = MACIZO - VENTILADO      S-V = SOLID - VENTED

EDICION 06/2011

MODELO	AÑO	Observaciones	D	S	REF.	A	B	C	D	D	E	X		KG
			T	V	ADR98					MIN		Ø	Nº	

VOLVO														Camión	
FH12 FH16	98-		D-T	S	1857377.1	181	377		45	41	45			25	
			D-T	V	1857377.0	181	377		45	41	45			25	
			D-T	S	1857410.1	220	410		45	41	45			30	
			D-T	V	1857410.0	220	410		45	41	45			30	
			D-T	S	1857434.2	220	434		45	41	45			30	
			D-T	V	1857434.1	220	434		45	41	45			30	
			D-T	V	1826430.1 1826900.4	222	434	250	45	40	150	M16 x 200	10	40	
FL4 SERIES FL04.06, 07, 08 FL04.09, 10, 11	85-91		D-T	V	1857322.0	132	322	154	30	27	90	M14 X 150	6	13	
FL4 SERIES FL04.06, 07, 08 FL04.09, 10, 11	91-00		D-T	V	1857322.0	132	322	154	30	27	90	M14 X 150	6	13	
			T	V	1857322.1	164	322	190	30	27	115	M12 X 175	6	14	
FL6 SERIES FL06.07, 08, 09 FL06.10, 11, 12 FL06.13, 14, 15	88-00		D-T	V	1857322.0	132	322	154	30	27	90	M14 X 150	6	13	
			D	V	1857322.3	132	322	154	30	27	90	M14 X 150	8	13	
			T	V	1857322.5	216	322	275	30	27	138	13	8	17	
			D-T	V	1857322.2	216	322	275	30	27	138	M12	8	15	
FL SERIES B-DUCO LLANTA 17,5"	05/00-		D	S	1826336.0	91	336	120	30	26	101	14 M10	10 2	20	
			T	S	1826336.2	215	336	275	30	26	139	20 M10	8 2	25	



A = DIAMETRO ACOPLAMIENTO      A = HUB DIAMETER  
 B = DIAMETRO EXTERIOR          B = EXTERIOR DIAMETER  
 C = ENTRECENTROS TALADRO      C = DISTANCE BETWEEN HOLES  
 D = ANCHO DEL DISCO              D = THICKNESS  
 E = ALTURA TOTAL                E = TOTAL HEIGHT  
 X = TALADROS                        X = HOLES  
 D-T = DELANTERO - TRASERO      D-T = FRONT - REAR  
 S-V = MACIZO - VENTILADO      S-V = SOLID - VENTED

EDICION 06/2011

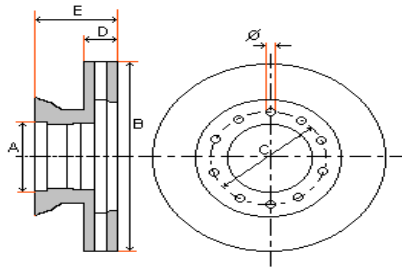
MODELO	AÑO	Observaciones	D	S	REF.	A	B	C	D	D	E	X		KG
			T	V	ADR98					MIN		Ø	Nº	

VOLVO															Camión		
FL SERIES C-DUCO LLANTA 19,5"  CON ABS	05/00-		D	S	1826375.0	91	336	120	30	26	101	14	10	20			
			T	S	1826375.1	225	375	275	45	37	150	20	8	33			
FL SERIES D-DUCO LLANTA 22,5"	05/00-		D-T	S	1857434.2	220	434		45	41	45			35			
			D-T	V	1857434.1	220	434		45	41	45			35			
FL12	04/02-			V	1826430.1 1826900.4	222	434	250	45	40	150	M16 x 200	10	40			
FLC SERIES 140 4.06 - 4.11	96-00		D-T	V	1857322.0	132	322	154	30	27	90	M14 X 150	6	13			
			T	V	1857322.1	164	322	190	30	27	115	M12 X 175	6	14			
FM9 FM12	98-		D-T	S	1857377.1	181	377		45	41	45			25			
			D-T	V	1857377.0	181	377		45	41	45			25			
			D-T	S	1857410.1	220	410		45	41	45			30			
			D-T	V	1857410.0	220	410		45	41	45			30			
			D-T	S	1857434.2	220	434		45	41	45			30			
			D-T	V	1857434.1	220	434		45	41	45			30			
			D-T	V	1826430.1 1826900.4	222	434	250	45	40	150	M16 x 200	10	40			
FS SERIES 7.16, 17, 18, 19	10/91-		D	V	1857322.3	132	322	154	30	27	90	M14 X 150	8	13			
VOLVO EJE ZF				V	1870434.0	203	434	235	45		130	M16 X 150	10	32			





EDICION 06/2011



A = DIAMETRO ACOPLAMIENTO      A = HUB DIAMETER  
 B = DIAMETRO EXTERIOR          B = EXTERIOR DIAMETER  
 C = ENTRECENTROS TALADRO      C = DISTANCE BETWEEN HOLES  
 D = ANCHO DEL DISCO              D = THICKNESS  
 E = ALTURA TOTAL                E = TOTAL HEIGHT  
 X = TALADROS                      X = HOLES  
 D-T = DELANTERO - TRASERO      D-T = FRONT - REAR  
 S-V = MACIZO - VENTILADO        S-V = SOLID - VENTED

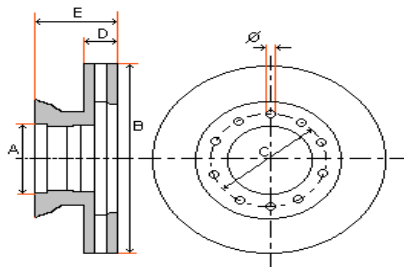
MODELO	AÑO	Observaciones	D	S	REF.	A	B	C	D	D	E	X		KG			
			T	V	ADR98												
																Ø	Nº

<b>VOLVO</b>													<b>Autobús</b>		
--------------	--	--	--	--	--	--	--	--	--	--	--	--	----------------	--	--

BUS B7, B10L, B12L	95-00		D	V	1857438.0	195	438	235	45	37	127	M16 x 150	10	35
BUS B7, B10, B12	00-		D-T	S	1857434.2	220	434		45	41	45			30
			D-T	V	1857434.1	220	434		45	41	45			30

<b>VOLVO</b>													<b>Maquinaria O.P.</b>		
--------------	--	--	--	--	--	--	--	--	--	--	--	--	------------------------	--	--

				S	1857450.0	160	450	185	25		95	11.5	16	22
LAGARTO A20,A25 861,5350,5350B				S	1857468.0	195	468	226	16	13	16	17	24	12
4300, 44,0, 4500, 5350 6300, 4300B, EL70, 70C L70,L90,L90B,L120				S	1857468.2	195	468	226	16	13	20	17	12	12
4500 L120, L120B				S	1857468.1	211	468	240	16	13	16	18	12	11
L50				S	1857470.0	195	470	226	19		71	17	12	20
				V	1857470.2	360	470	400	40		200	17	20	40
LARGATO A35, A35C BM				V	1857470.1	360	470	400	48		224	17	20	45
4600B L160				S	1857480.0	225	480	250	16	13	16	17	16	14
4400				S	1857481.0	225	481	250	16	13	21	16.5	16	12



A = DIAMETRO ACOPLAMIENTO      A = HUB DIAMETER  
 B = DIAMETRO EXTERIOR          B = EXTERIOR DIAMETER  
 C = ENTRECENTROS TALADRO      C = DISTANCE BETWEEN HOLES  
 D = ANCHO DEL DISCO              D = THICKNESS  
 E = ALTURA TOTAL                E = TOTAL HEIGHT  
 X = TALADROS                      X = HOLES  
 D-T = DELANTERO - TRASERO      D-T = FRONT - REAR  
 S-V = MACIZO - VENTILADO      S-V = SOLID - VENTED

EDICION 06/2011

MODELO	AÑO	Observaciones	D T	S V	REF. ADR98	A	B	C	D	D MIN	E	X		KG
												Ø	Nº	

**YORK** *Remolque / Trailer*

SB6000	1/00-			V	1853370.8	176	377	201	45	37	139	M14 x 150	8	25
SB7000	1/00-			V	1853430.8	211	430	238	45	37	132	M14 x 150	10	30

**ZF** *Ejes*

				V	1870430.2	135	430	165	45	39	105	15 M14	14 2	31
N4420 N4421 N4426				V	1870430.0	203	430	235	45	39	131	M16 X 150	10	31
				V	1870432.0	194	432	220	45	37	135	M16 X 150	10	33
					1870434.0	203	434	235	45		130	M16 X 150	10	32
				S	1870460.0	198	460	225	20		50	17	16	18
					1870490.0	205	490	225	22		40	19	20	30
					1880490.2	198	490	225	26		60	19	16	41
					1870490.2	198	490	225	26		60	19	16	41